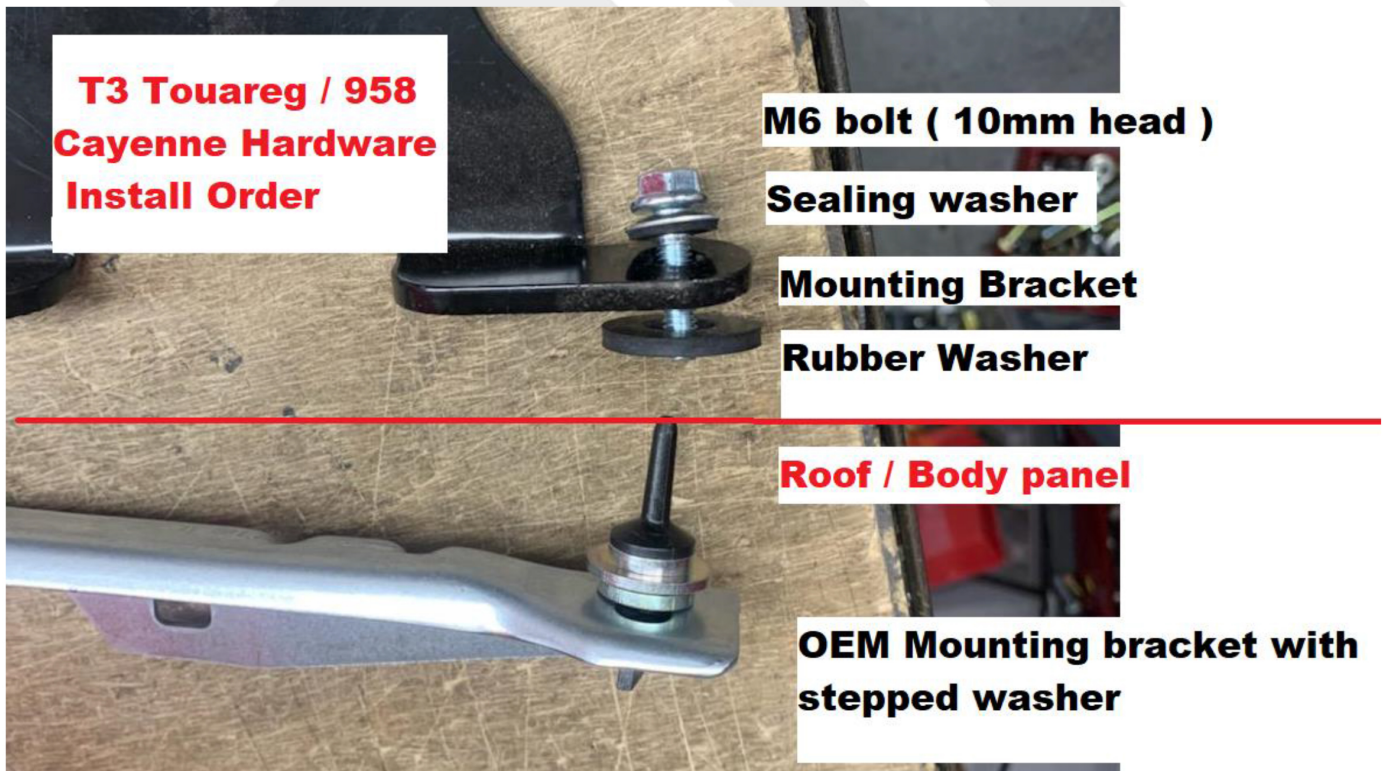




## ***T3 Touareg / 958 Cayenne Modular Roof Rack install (2011-2017)***

Since some of the Cayenne models did not come with roof rails. We have designed this it to include the OEM brackets needed to install our modular roof rack on the 958 chassis.





These brackets are installed on each corner and they are corner specific so you cannot get them backwards.







Using the OEM brackets, mark and drill from inside out. The final hole size is 19/32 inch / or 15mm That's larger than the M6 bolts on the rail, but needed to accommodate the shoulder washer. I started small and then worked the final hole with a Dremel tool'



The washer shoulder should be just high enough to compensate for the roof sheet metal, which is about 20 or 22 GA sheet metal.



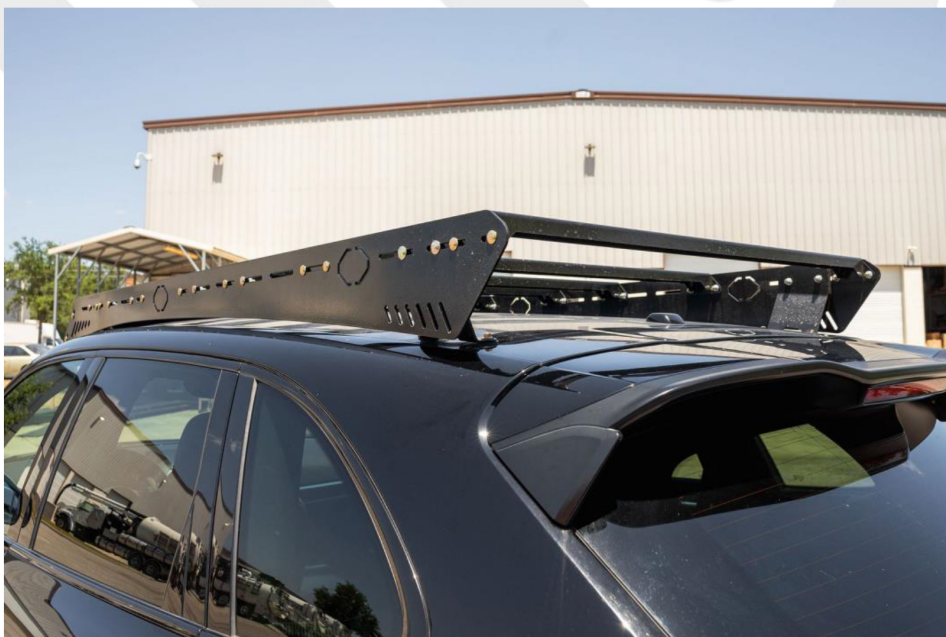




Using the supplied rubber washers install them into place before putting the brackets down.

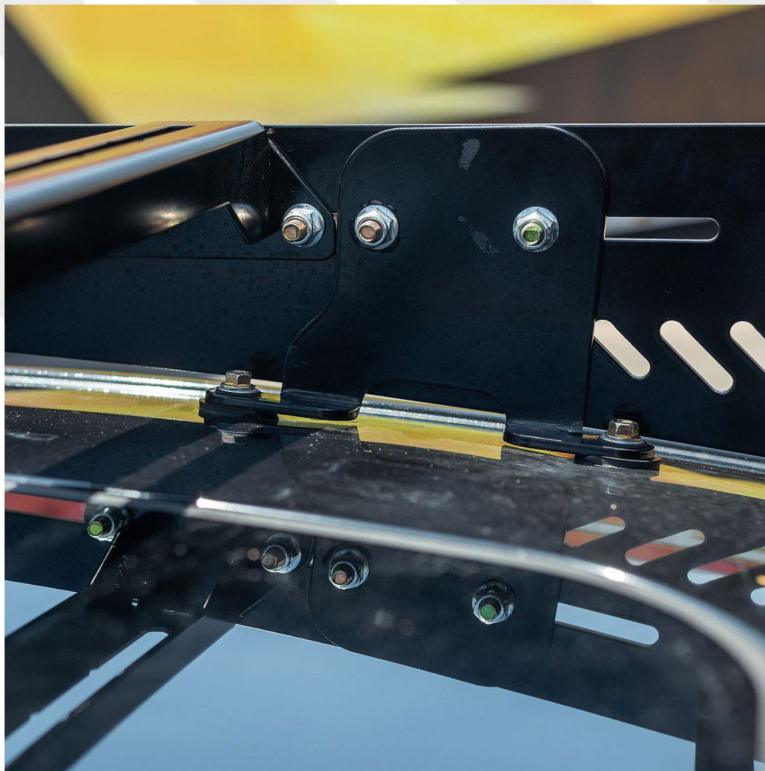
Here you can see the final pads waiting for rails. Notice the shoulder of the steel washer just peeking through.

Again, view from the inside.

















### Sun Visors, Removing and Installing



#### Note

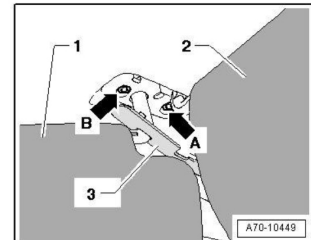
The following describes removing and installing on the left side of the vehicle. Removing and installing on the right side is identical.

#### Removing

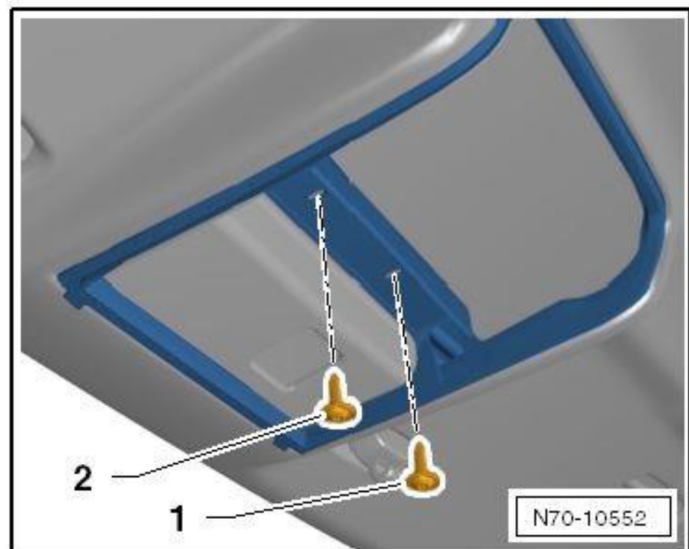
- Turn off the ignition.
- Detach the sun visor -1- from the inner mount and fold to the side.
- Use a small screwdriver to open the cover of the inner mount and remove the bolt (3 Nm).
- Carefully detach the cap -3- using the -3409-.
- Remove the bolt -arrow A- (3 Nm).
- Use a small screwdriver to remove the wedge -arrow B- and remove the sun visors -1- and -2- from the roof crossmember.
- Disconnect the wiring harness from the sun visor.

#### Installing

Install in reverse order of removal.



- Remove the bolts -1 and 2- under the bracket.



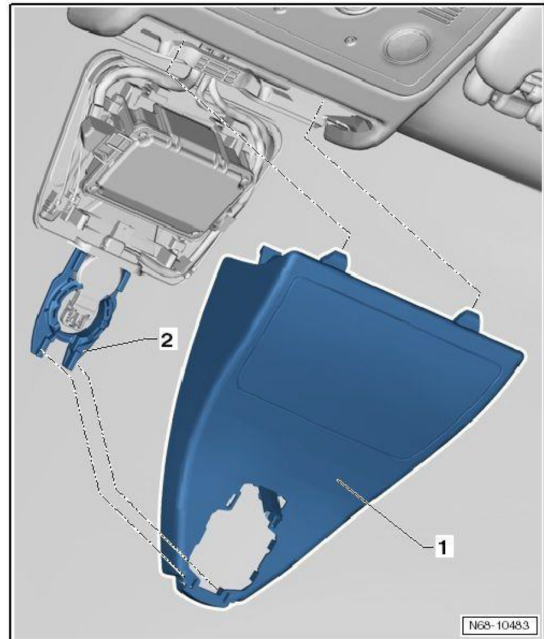




### Camera Cover, Removing and Installing

#### Removing

- Turn off the ignition.
- Remove the interior rearview mirror. Refer to → Chapter „Interior Rearview Mirror, Removing and Installing“.
- Unclip the camera cover -1- in the front from the interior rearview mirror retaining plate -2- and tilt down.
- Unhook the camera cover from the headliner.



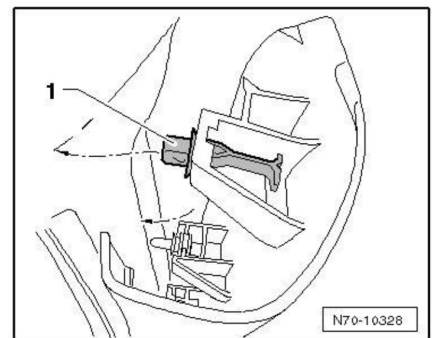
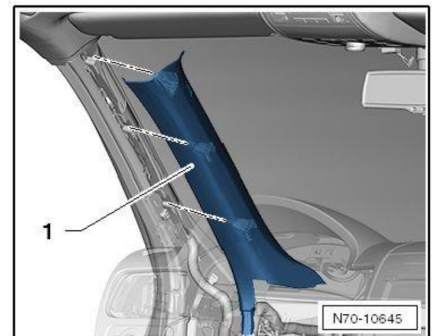
### A-Pillar Upper Trim, Removing and Installing

#### Note

The following describes removing and installing on the left side of the vehicle. Removing and installing on the right side is identical.

#### Removing

- Remove the instrument panel side cover. Refer to → Chapter „Side Instrument Panel Covers, Removing and Installing“.
- Remove the A-pillar center trim. Refer to → Chapter „A-Pillar Center Trim, Removing and Installing“.
- Pull the trim -1- in the area of the “airbag” label into the vehicle interior out of the catch in the A-pillar.





## B-Pillar Trim, Removing and Installing



### Note

The detaching and attaching procedure is described for the left side of the vehicle. The procedure for the right side is performed in the same manner.

### Detachment

- Unclip the B-pillar trim -2- from the sill panel strip -1- and then in the center from the B-pillar.
- Press the B-pillar trim outward in the transition area to the headliner and then pull it forward from under the headliner.
- Disconnect the connectors.

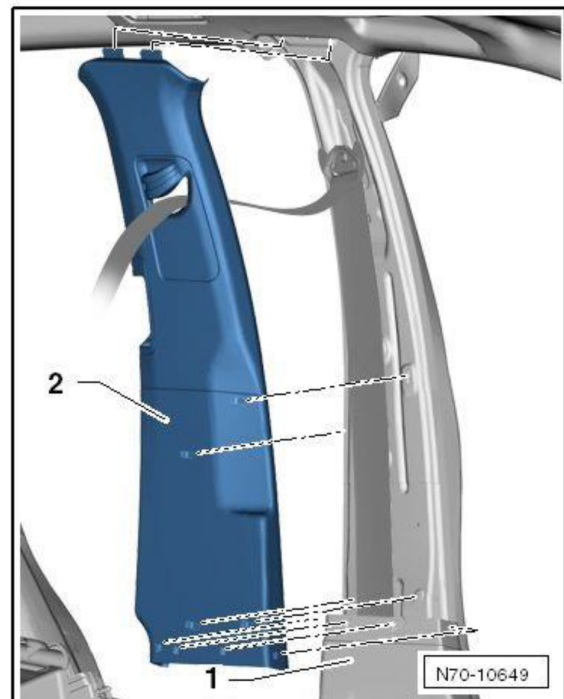
### Mounting

- Attachment is performed accordingly in the reverse order of removal.



### Note

Check whether the trim is in the door seal piping after installation.







## D-Pillar Trim, Removing and Installing

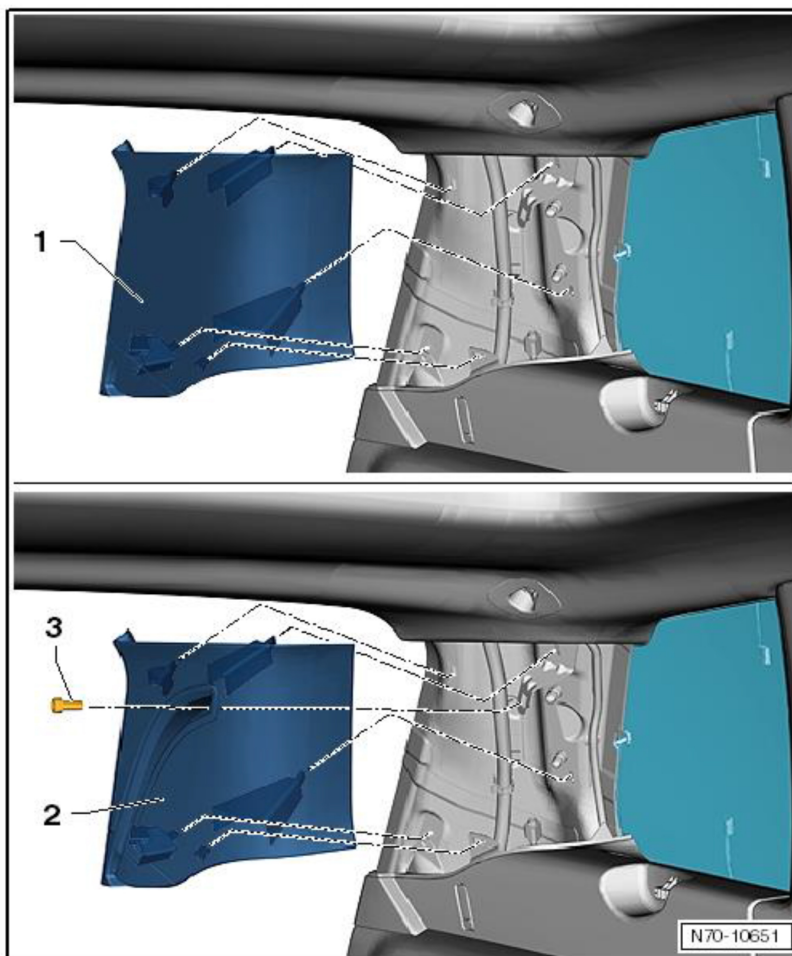


### Note

The following describes removing and installing on the left side of the vehicle. Removing and installing on the right side

### Removing

- Luggage compartment cover rolled up.
- In vehicles with basic equipment, unclip the trim -1-.
- In vehicles with comfort equipment, remove the bolt -3- (3 Nm) and unclip the trim -2-.



removing



## C-Pillar Trim, Removing and Installing



### Note

The detaching and attaching procedure is described for the left side of the vehicle. The procedure for the right side is performed in the same manner.

### Detachment

- Backrest folded forward.
- Unclip the C-pillar trim -2- from the wheel housing trim -1-.
- Press the C-pillar trim outward in the transition area to the headliner and then pull it forward from under the headliner.

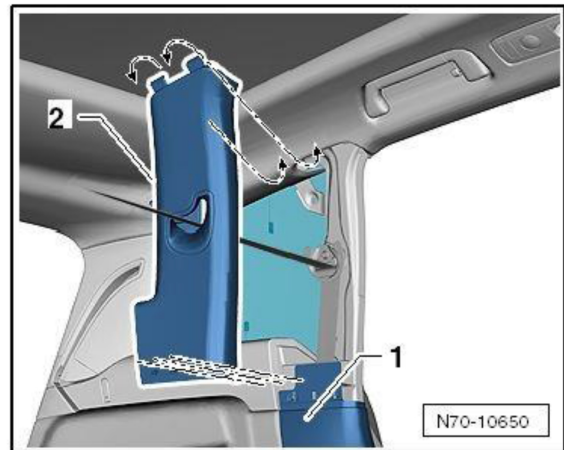
### Mounting

- Attachment is performed accordingly in the reverse order of removal.



### Note

Check whether the trim is in the door seal piping after installation.



## Roof Grab Handle, Removing and Installing



### Note

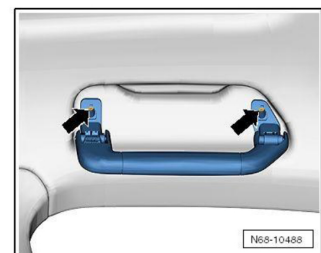
The following describes removing and installing the left front roof grab handle. Removing and installing the other roof grab handles is identical.

### Removing

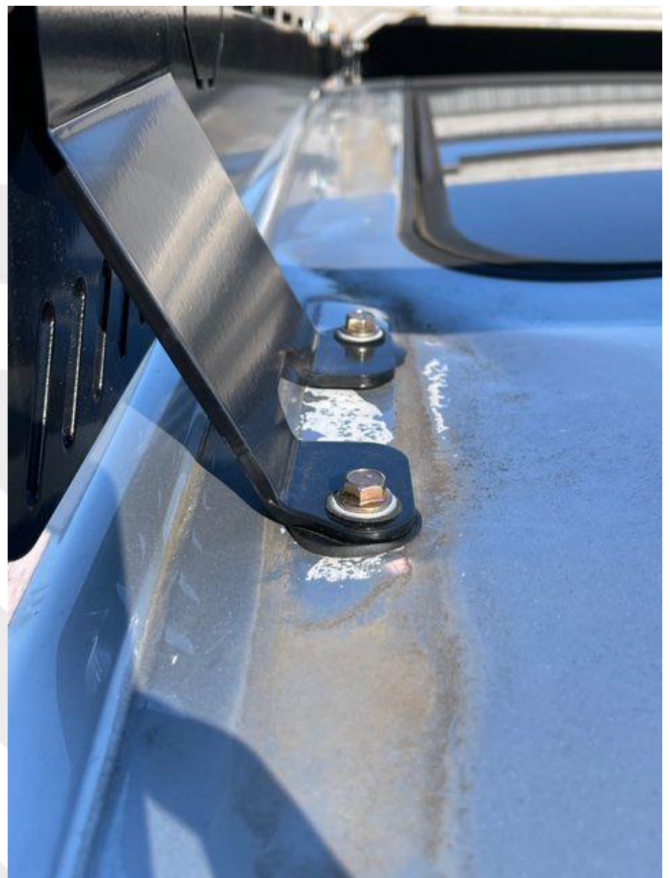
- Fold down the grab handle and remove both caps.
- Remove the bolts -arrows- (3 Nm) and the grab handle.

### Installing

- Install in reverse order of removal.







Remove 10mm nuts and OEM roof rails can be removed from vehicle.

Install supplied bolts from the top down into the car. Install nuts to tighten down.













## FRONT FAIRING.

MAKE SURE YOU SLIDE THE FAIRING ALL THE WAY ONTO THE ROOF. THIS WILL KEEP FROM MAKING NOISE AND FLAPPING WHEN DRIVING.

Install rubber seal included on end of the fairing where roof meets the fair contact area.

Bracket Location.

LEFT FRONT.





RIGHT FRONT



LEFT REAR







RIGHT REAR



***IF YOU HAVE ANY QUESTIONS, COMMENTS, OR CONCERNS RELATED TO YOUR PRODUCT  
PLEASE CONTACT US!***

**440 SPRINGBROOK ROAD. CHARLOTTE, NC 28217 | 704-559-8100  
INFO@EUROWISE.COM | WWW.EUROWISE.COM | SHOP.EUROWISE.COM**