

4.0T Street Density Motor Mounts**034 MOTOR SPORT**

034Motorsport Street Density Motor Mounts for the 4.0T are a performance upgrade over the factory mount. Street Density Motor Mounts are manufactured with 55 durometer rubber to limit unwanted noise and vibration transfer into the cabin. Our mounts are also void and fluid-free; eliminating the slop, excess movement, and premature failure associated with the factory mounts.

Installation Spiciness Rating: HOT

Installation of your 4.0T Density Motor Mounts is a straightforward process that should take approximately 6 hours to complete.

Supplied Parts:

- (2x) 034 4.0T Street Density Motor Mounts

Tools Needed:

- 18mm Socket
- 16mm Socket
- 10mm Socket
- (2x) 16mm Wrenches
- T30 Torx
- T25 Torx
- 14mm Triple Square
- 10mm Triple Square
- Pickle Fork
- Torque Wrench
- Engine Cradle
- Transmission Jack

Getting Started

Confirm you have received all the parts included with your purchase by reading the complete guide, if there are missing components, please contact:

customerservice@034motorsport.com

About This Guide

This Install Guide documents the installation process on an C7.5 Audi S7. There may be minor differences depending on specific vehicle, market, options, etc.

Note: While no visible error codes or check engine light (CEL) will be shown on the dashboard, it is possible that some vehicles may have a "soft code" when scanned. There is no cause for concern with this code, as your car will function without issue.

New transmission bolts are required.

Install Steps

Step 1

Open the hood.

Step 2

Remove the airbox and engine cover.

Step 3

Install engine cradle onto block-mounted hooks.



Step 4

Raise the car to about chest high.



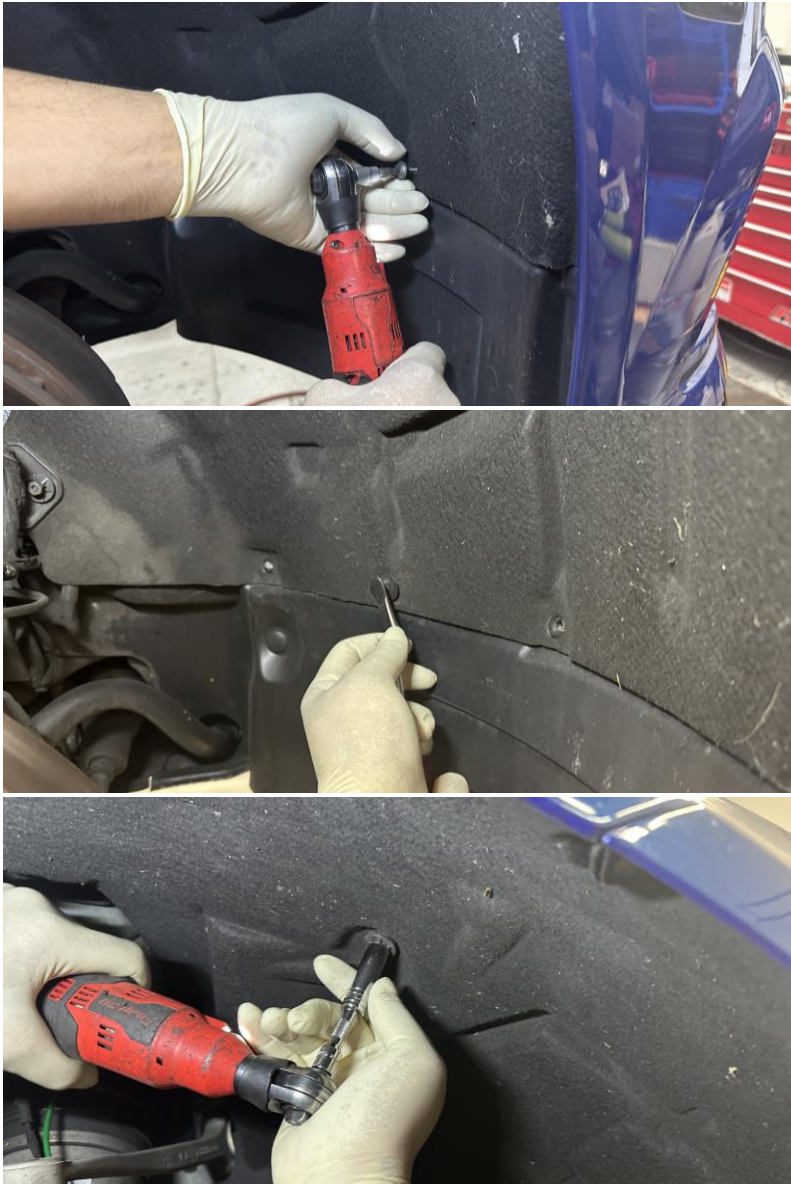
Step 5

Remove the front wheels.



Step 6

Using a T25 bit, pickle fork, and a 10mm socket, remove the fender liner hardware.

**Step 7**

Using a 10mm socket, remove the axle guards.

**Step 8**

Unclip the ride height sensor harness.

**Step 9**

Remove the locking tabs from the fender liner.
Remove the fender liner.



Step 10

Raise the car higher to access the underside.

Step 11

Using a T25, T30, and a 10mm triple-square, remove the belly pan hardware.

**Step 12**

Using a T25 bit and a pickle fork, remove the hardware from the lower splash guard.

**Step 13**

Unhook the hose and remove the lower splash guard.



Step 14

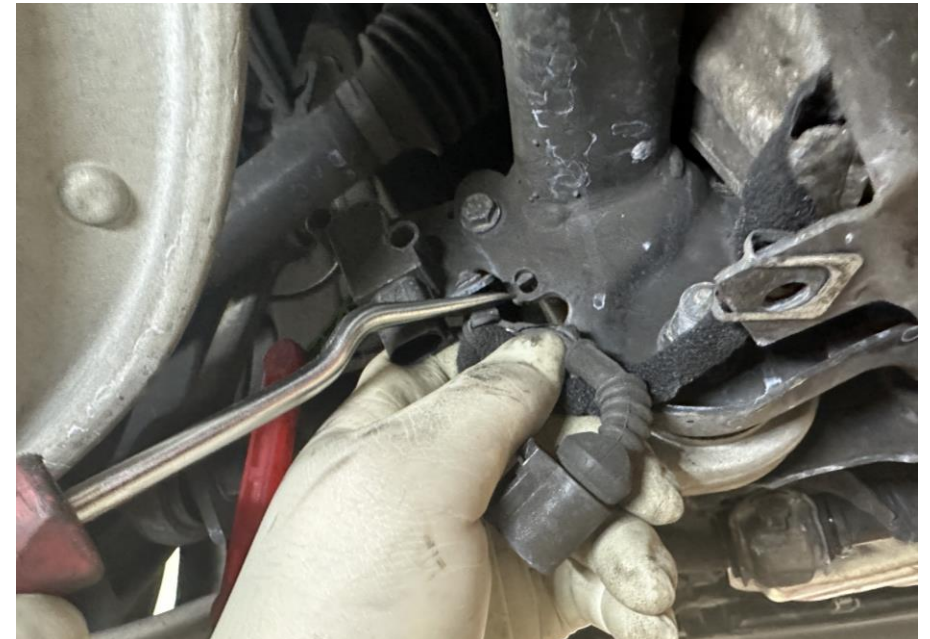
Using a T25, remove the rear belly pan.

**Step 15**

Using a T30, remove the side heat shields, near axles.

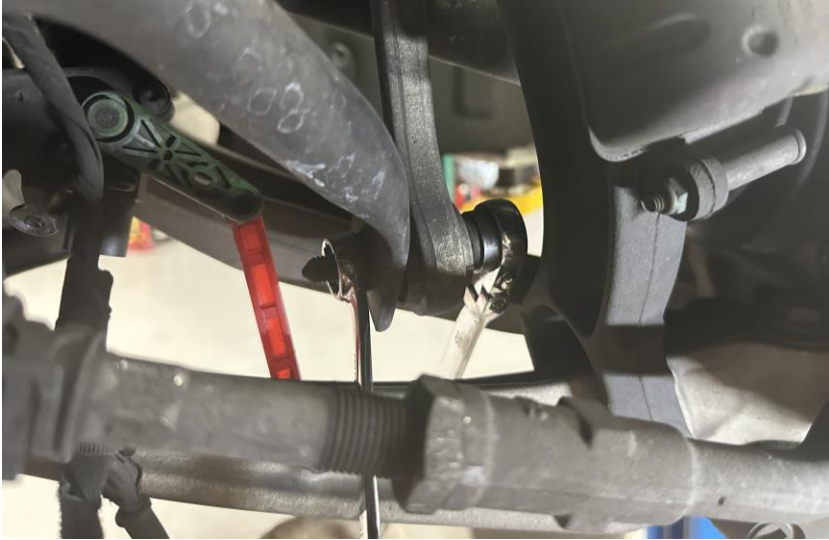
**Step 16**

Unplug the ride height sensor and unclip the harness from the subframe.



Step 17

Using (2x) 16mm wrenches, separate the sway bar from the end links.

**Step 18**

Remove the nut from the ground wires.

**Step 19**

Unplug the engine harness.

**Step 20**

Using a 10mm triple-square, remove the hardware for the harness bracket on the passenger side.



Step 21

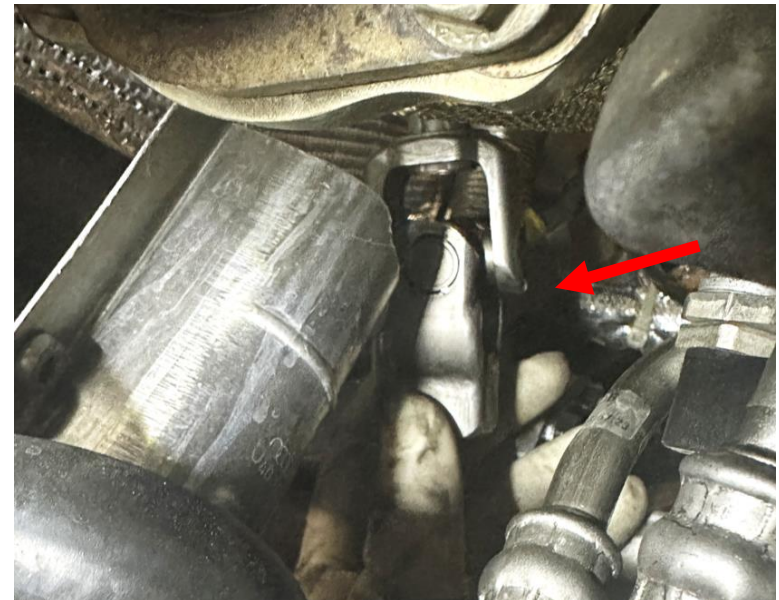
Using a 10mm triple-square, remove the hardware for the coolant brackets on the driver side.

**Step 22**

Using a 10mm triple-square, remove the bolt from the steering rack joint.

**Step 23**

Disengage the steering column from the rack.



Step 24

Disconnect the steering rack.



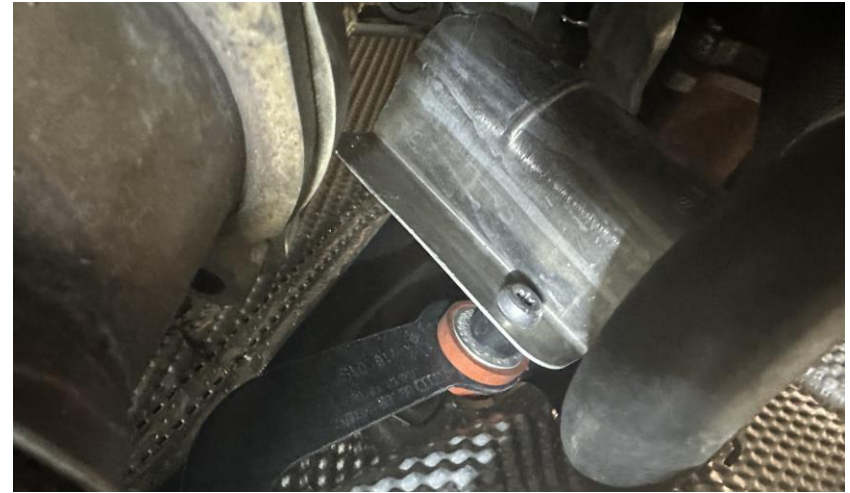
Step 25

Using an 18mm socket, remove the subframe brace.



Step 26

Using a T30 and a 10mm socket, remove the upper coolant line bracket.



Step 27

Disconnect the coolant pump.



Step 28

Unplug the motor mounts.

**Step 29**

Using a 14mm triple-square, remove the bolt securing the motor to the mount.

**Step 30**

Using a 10mm triple-square, remove the frame rail extensions.

**Step 31**

Use a transmission jack to support the subframe.

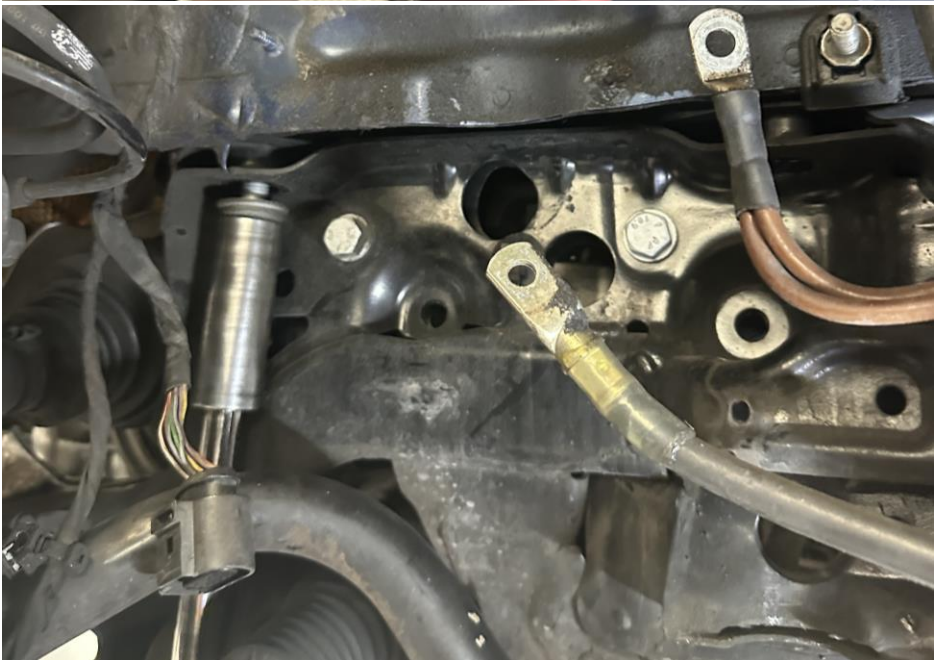
Step 32

Using an 18mm socket, remove the control arm bolt from the shock tower.



Step 33

Using an 18mm socket, remove the subframe hardware.

**Step 34**

Using a 10mm triple-square, remove the hardware from the motor mount brackets.

**Step 35**

Using a 16mm socket, remove the motor mount hardware.



Step 36

Carefully lower the transmission about an inch.

Step 37

Remove the motor mounts. This will be frustrating! Mind the coolant lines.

**Step 38**

Using a T30, transfer the acceleration sensor to the 034 motor mount.

**Step 39**

Install the 034 motor mount. Loosely secure the bracket to the mount. Plug in the mounts as well.

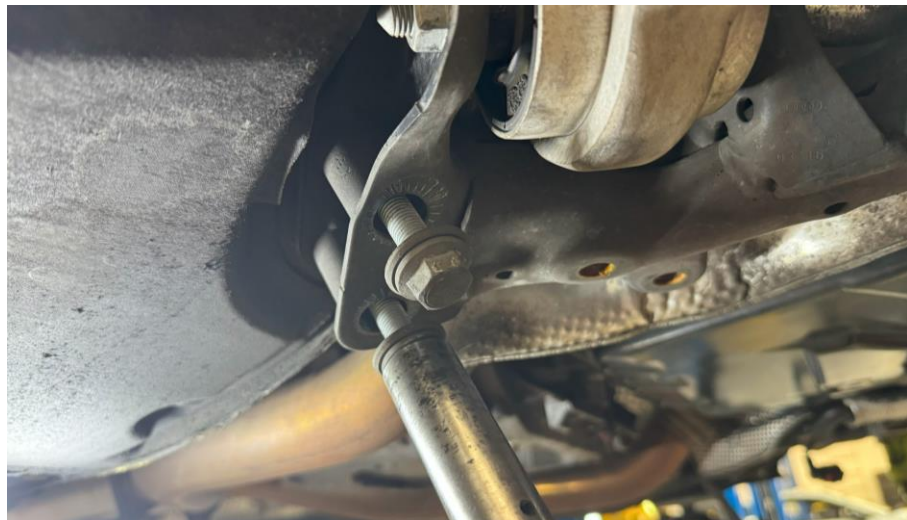


Step 40

Guide the cables and hoses into place as you carefully raise the subframe.

Step 41

Using an 18mm socket, reinstall the subframe with new hardware. **Torque to 115Nm+90°.**



Step 42

Carefully lower the engine from the hoist. Watch for the alignment on the motor mount/engine bolt.



Step 43

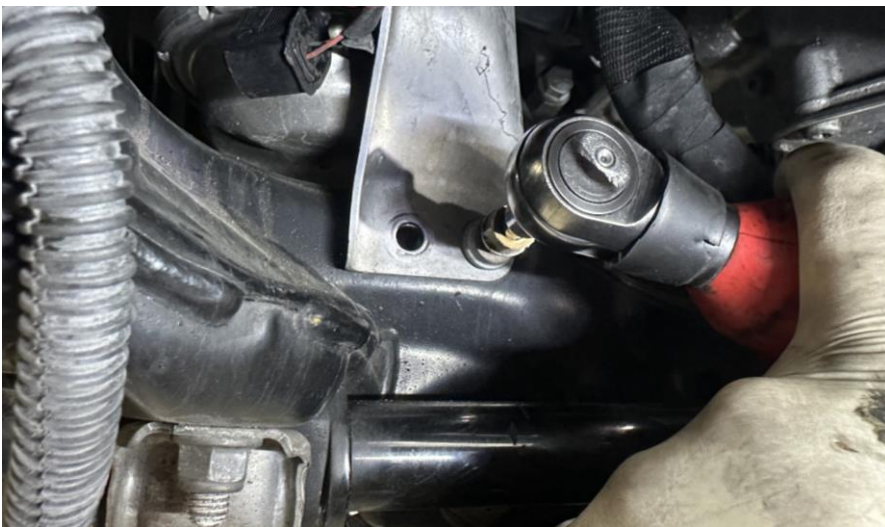
Using an M14 triple-square, install the motor mount bolt.

Torque to 90Nm+90°.



Step 44

Using a 10mm triple-square, reinstall the hardware for the motor mount brackets. **Torque to 20Nm.**



Step 45

Using a 16mm socket, install the motor mount hardware.

Torque to 55Nm.



Step 46

Using an 18mm socket, reinstall the control arm bolt.

Torque to XX Nm.



Step 47

Using a 10mm triple-square, reinstall the frame rail extensions.

**Step 48**

Reconnect the coolant pump.

**Step 49**

Using a 10mm triple-square, reinstall the hardware for the coolant brackets on the driver side.



Step 50

Using a T30 and a 10mm socket, reinstall the upper coolant line bracket.



Step 51

Using an 18mm socket, reinstall the subframe brace.



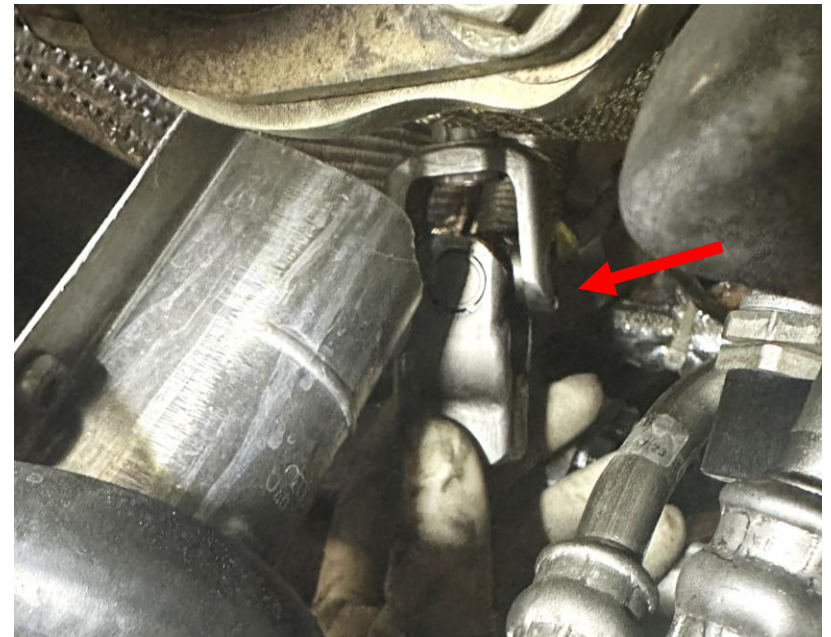
Step 52

Reconnect the steering rack.



Step 53

Reconnect the steering column to the rack.



Step 54

Using a 10mm triple-square, reinstall the bolt to the steering rack joint.

**Step 55**

Using a 10mm triple-square, reinstall the hardware for the harness bracket on the passenger side.

**Step 56**

Plug in the engine harness.

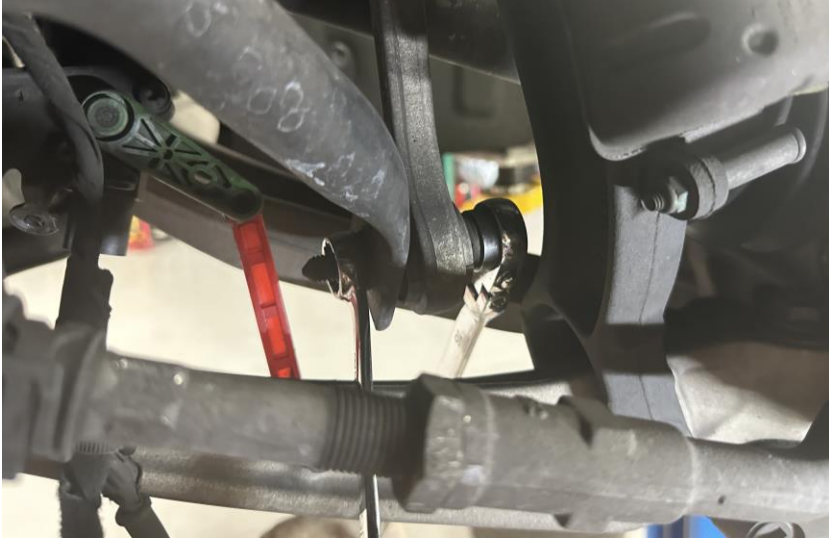
**Step 57**

Reinstall the nut for the ground wires.



Step 58

Using (2x) 16mm wrenches, reinstall the sway bar to the end links.

**Step 59**

Plug in the ride height sensor and clip the harness back to the subframe.

**Step 60**

Using a T30, reinstall the side heat shields, near axles.

**Step 61**

Using a T25, reinstall the rear belly pan.



Step 62

Attach the hose to the lower splash guard



Step 63

Using a T25 and push-locks, install the lower splash guard.

Step 64

Using a T25, T30, and a 10mm triple-square, reinstall the belly pan hardware.



Step 65

Reattach the ride height sensor harness.



Step 66

Using a T25 bit, 10mm socket, and push-locks, reinstall the fender liner.



Step 67

Reinstall the locking tabs for the fender liner.



Step 68

Using a 10mm socket, reinstall the axle guards.



Step 69

Reinstall the front wheels.



Step 70

Lower the car and remove the engine cradle.



Step 71

Reinstall the airbox and engine cover.

Step 72

Close the hood and you're done. Finally! Enjoy.

