

[Billet Aluminum Upper & Lower Dogbone Mount Insert Pair, Volkswagen & Audi MQB And MQB EVO](#)

**034 MOTOR SPORT**

034Motorsport's Billet Upper Dogbone Mount Insert for 8V/8S Audi A3/S3/RS3/TT/TTS/TTRS & MkVII Volkswagen Golf/GTI/R is the new standard in performance and durability. This dogbone insert was engineered with performance in mind, manufactured from billet aluminum to maintain proper articulation and provide longevity.

### Installation Spiciness Rating: MILD



Installation of your 034Motorsport Upper Dogbone Insert is a straightforward process that will take approximately 1 hour to complete.

#### Supplied Parts:

- 034 Upper Dogbone Mount Insert
- 034 Lower Dogbone Mount Insert
- New OE Hardware

#### Tools Needed:

- 21mm Socket
- 16mm Socket
- T45 Torx Bit
- T25 Torx Bit
- Pry Bar
- Torque Wrench

#### About This Guide

This Install Guide documents the installation process on an 8V Audi S3. There may be minor differences depending on specific vehicle, market, options, etc.

## Getting Started

Confirm you have received all the parts included with your purchase by reading the complete guide, if there are missing components, please contact:

[customerservice@034motorsport.com](mailto:customerservice@034motorsport.com)

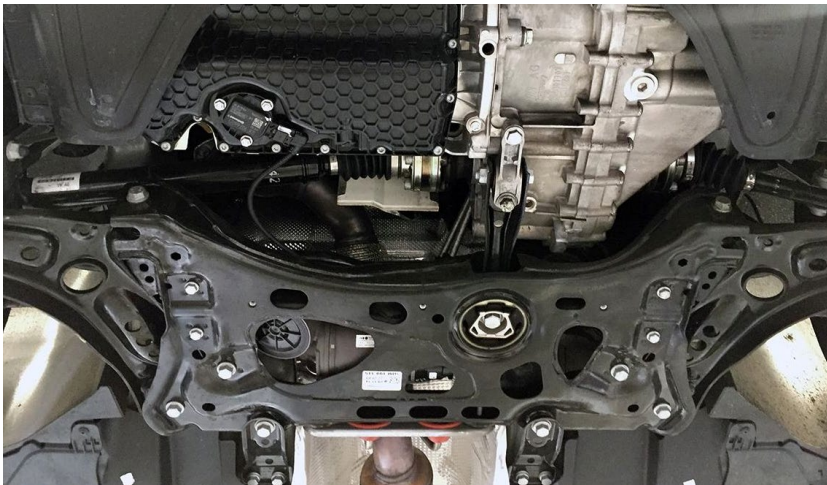
## Install Steps

### **Step 1**

Safely lift the car.

### **Step 2**

Locate the factory dogbone mount securing the engine/transmission to the front subframe. It is located under the belly pan. You will need the T25 and T45 Torx to remove the belly pan.



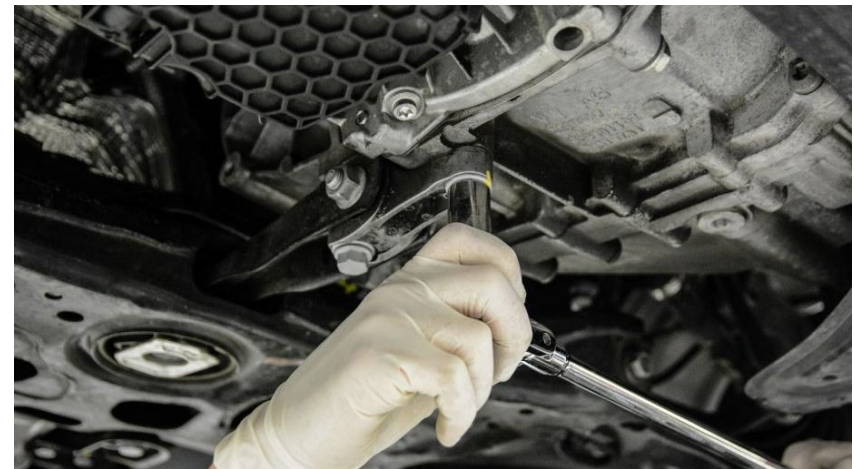
### **Step 3**

Using a 21mm Socket, remove the bolt securing the factory dogbone mount to the front subframe.



### **Step 4**

Using a 16mm socket, remove the two bolts securing the factory dogbone mount to the transmission.



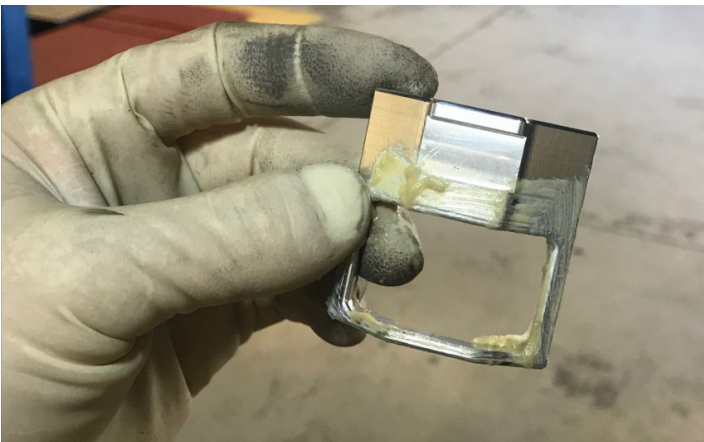
#### Step 5

Remove the factory dogbone mount from the vehicle by sliding forward and out of the front subframe.



#### Step 6

Apply a light coating of grease on the 034-509-1035 MQB Upper Dogbone Mount Insert.



#### Step 7

Orientate the insert this way.



#### Step 8

Press insert straight up into mount, in the front void space.





#### Step 9

Press insert fully into mount.



#### Step 10

Using your thumb, press insert up into upper portion of the mount.



#### Step 11

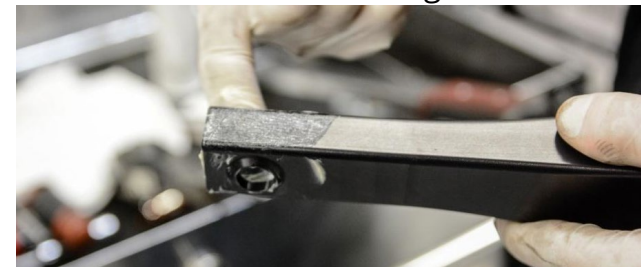
This is how the insert should be positioned when fully inserted. The pendulum arm window should be unobstructed.



**Note:** steps 12-17 show the 034Motorsport Billet + Spherical Dogbone Mount being installed. If you are reinstalling the stock dogbone, it will be the same steps.

#### Step 12

Apply a coat of grease to the tail end of the 034Motorsport Billet + Spherical Dogbone Mount to ease installation into the rubber bushing.



### Step 13

Insert the tail end of the 034Motorsport Billet + Spherical Dogbone Mount into the front subframe and align front holes with those on the transmission.



### Step 14

Loosely install the front two bolts securing the 034Motorsport Billet + Spherical Dogbone Mount to the transmission using the new supplied factory bolts.



### Step 15

Loosely install the 034 Lower Dogbone Mount Insert to the transmission using the new supplied factory bolts.



### Step 16

Using a 16mm socket, torque the 2 new factory bolts securing the 034Motorsport Billet + Spherical Dogbone Mount to the engine/transmission to **50 Nm + 90°**.





#### Step 17

Using a 21mm socket, torque the new factory bolt securing the 034Motorsport Billet + Spherical Dogbone Mount to the front subframe to **130 Nm + 90°**.



#### Step 18

Reinstall the belly pan using T25 and T45 Torx bolts. Torque T45 Torx bolts to **23Nm**.

#### Step 19

Lower your vehicle.

#### Step 20

Enjoy the upgrade!

