

2018-2023 Mustang Hood Heat Extractors

Installation Instructions

P/N: 422325 (R1320-HDEXTKIT)



Application: 2018-2023 Ford Mustang 5.0L and 2.3L with Automatic/Manual Transmission

Important Note:

Before installing your ROUSH Hood Heat Extractors, please read through the entire installation procedure and check to make sure all items are present. Contact ROUSH Customer Service at 1-800-59-ROUSH, 9:00 AM to 5:00 PM weekdays, for any questions regarding fit or instructions that are unclear to you.

Table of Contents

Packing List..... 3

Equipment and Supplies Required 3

Limit of Liability Statement 4

Safety Precautions..... 4

Work Safely!..... 4

Installation 5

Templates..... 9

PACKING LIST

Description	Part Number	Quantity
HOOD HEAT EXTRACTOR - RETAIL KIT	R1320-HDEXTKIT	1
HOOD HEAT EXTRACTOR - LH : PAINTED GLOSS BLACK	1320-16C825	1
HOOD HEAT EXTRACTOR - RH : PAINTED GLOSS BLACK	1320-16C826	1
STUD - THREADED #6-32 x 1-1/4"	25112	12
NUT - #6-32 HEX FLANGE	37332	12
EXTRACTOR - DIE CUT TAPE (EX4011x6.25 WIDE)	1320-16C925	4
EXTRACTOR - DIE CUT TAPE (EX4011x6.25 WIDE) FRONT EDGE	1320-16C926	2
EXTRACTOR - DIE CUT TAPE (EX4011x6.25 WIDE) REAR EDGE	1320-16C927	2
HEAT EXTRACTOR BLACK OUT GRAPHIC - LH	1318-16C829LH	1
HEAT EXTRACTOR BLACK OUT GRAPHIC - RH	1318-16C830RH	1
Drill Template LH (NEED TO BE PRINTED)	1318-16C929TMPL	1
Drill Template RH (NEED TO BE PRINTED)	1318-16C930TMPL	1

EQUIPMENT AND SUPPLIES REQUIRED

- 8 mm Socket
- 1/8" Drill Bit
- 7/32" Drill Bit
- 1" Hole Saw
- Center Punch
- Commercially Available Clear Coat (Motorcraft P/N: PM-19500-6000)
- Plastic Pry Tool
- 1/16" Allen Wrench
- Trim Removal Tool

If you are missing any items, please call us toll free at 1-800-59-ROUSH.

LIMIT OF LIABILITY STATEMENT

The information contained in this publication was accurate and in effect at the time the publication was approved for printing and is subject to change without notice or liability. ROUSH Performance Products (RPP) reserves the right to revise the information presented herein or to discontinue the production of parts described at any time.

SAFETY PRECAUTIONS



CAREFULLY READ THE IMPORTANT SAFETY PRECAUTIONS and WARNINGS BEFORE PROCEEDING WITH THE INSTALLATION!

Appropriate disassembly, assembly methods and procedures are essential to ensure the personal safety of the individual performing the kit installation. Improper installation due to the failure to correctly follow these instructions could cause personal injury or death. Read each step of the installation manual carefully before starting the installation.

- Always wear safety glasses for eye protection.
- Place ignition switch in the OFF position.
- Always apply the parking brake when working on a vehicle.
- Block the front and rear tire surface to prevent unexpected vehicle movement.
- If working with a lift, always consult vehicle manual for correct lifting specifications.
- Operate the engine only in well-ventilated areas to avoid exposure to carbon monoxide.
- Do not smoke or use flammable items near or around the fuel system.
- Use chemicals and cleaners in well-ventilated areas.
- Batteries produce explosive gases, which can cause personal injury. Therefore, do not allow flames, sparks or flammable substances to come near the battery.
- Keeps hands and any other objects away from the radiator fan blades.
- Keep yourself and your clothing away from moving parts when the engine is running.
- Do not wear loose clothing or jewelry that can get caught in rotating parts or scratch surface finishes.
- Allow the engine, cooling system, brakes and exhaust to cool before working on a vehicle.

WORK SAFELY!

Perform this installation on a good clean level surface for maximum safety and with the engine turned off.

INSTALLATION

The following section will guide you through the installation of the ROUSH heat extractors.

1. Open the hood and remove the hood blanket by taking out the fourteen (14) push pins that are circled yellow below with an appropriate trim removal tool. Note: Set the fourteen (14) push pins aside for re-use.



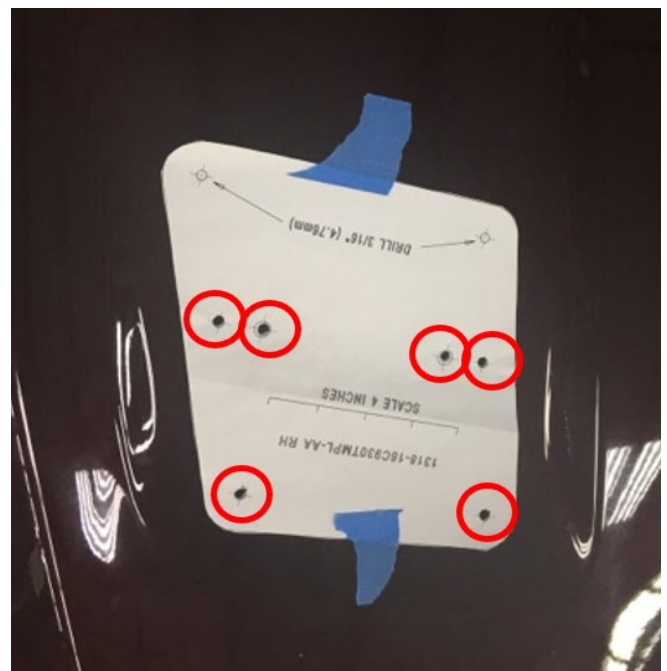
2. Remove the four (4) 8 mm nuts at the bottom front edge of each factory heat extractor as shown below. Repeat on opposite side.



3. Press down on the tabs and remove the factory heat extractor from the hood. Repeat on opposite side.



4. Print and Cut out the drill templates (LH P/N: 1318-16C929TMPL and RH P/N: 1318-16C930TMPL) from the last two pages of this instruction manual. (IMPORTANT: Print template to scale. Check scale by measuring reference line with a ruler).
5. Use the corresponding template to align black outlined holes with factory holes (using a pen or center punch). Tape the templates in place. Repeat on other side.



6. Mark the two (2) red circled holes with a center punch. Repeat on opposite side.



7. Drill the two (2) marked rear holes with an 1/8" bit (Pilot hole) followed by a 7/32" bit (Enlarge pilot hole).

NOTE: When drilling, make sure to continue and drill through the inner structure of the hood. After the holes are drilled, apply commercially available clear coat (Motorcraft P/N: PM-19500-6000) to the exposed metal so that it does not oxidize. Repeat on opposite side.



8. On the underside of the hood, drill two(2) 1-inch holes ONLY in the inner structure using the previously drilled 1/8" holes from the last step as pilot holes. **IMPORTANT: DO NOT DRILL A 1-INCH HOLE IN HOOD SKIN!** Once the holes are drilled, apply commercially available clear coat (Motorcraft P/N: PM-19500-6000) to the exposed metal so that it does not oxidize. Repeat on opposite side.



9. Clear away metal shaving debris with air hose and rag to prepare area for graphic. Spray the hood with a soapy water mixture and wipe with a clean cloth. Remove the backing off of the blackout graphics (LH P/N: 1318-16C829LH and RH P/N: 1318-16C830RH) and spray both the hood and the back of the graphic with soapy water. NOTE: LH is the driver side and RH is the passenger side.



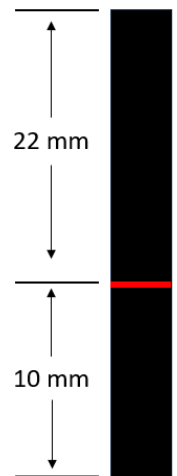
10. Align the graphic to the factory hood air vent and lay the graphic (LH P/N: 1318-16C829LH and RH P/N: 1318-16C830RH) onto hood, applying the graphic top down as shown. Using a plastic applicator, work out larger bubbles in the graphic by pushing them to the outer edges. Pop smaller bubble with a razor blade or pin if needed. Punch x9 holes for studs as shown below (red circles). Repeat on opposite side.
 NOTE: When working the graphics on compound curves, it may be helpful to use a heat gun to prep the graphic adhesive.



11. Mark 10 mm up from the bottom of all twelve (12) supplied studs (P/N: 25112) as shown below.



12. Hand start each stud (P/N: 25112) (Qty. 6 per side) into the heat extractors (LH P/N: 1320-16C825-AA and RH P/N: 1320-16C826-AA). Use a 1/16" Allen key to tighten each stud down to the 10mm mark made from the last step. Note: Stud (P/N: 25112) total length=32mm, You should have 22 mm of stud protruding.



STUD (25112) Part Dimensions
 (For Reference Only)

13. Clean the back side of the heat extractors (LH P/N: 1320-16C825-AA and RH P/N: 1320-16C826-AA) with an isopropyl alcohol and water mix, wipe with a clean cloth. Remove one side of the four(4) double-sided tape pieces (P/N: 1320-16C925 Qty.2, P/N:1320-16C926 Qty.1, P/N: 1320-16C927 Qty.1), and place them onto each corresponding extractor's outer ribbings as shown below. Repeat on opposite side.



Note: Make sure the hood surface is clean and without any debris before the next step.

14. Remove the back side of the four(4) double-sided tape pieces of the heat extractor assembly (LH P/N: 1320-16C825 and RH P/N: 1320-16C826). Place heat extractor assembly into position by aligning Qty. 6 studs (25112) of the heat extractor assembly into the corresponding holes on the hood surface

Note: Both sides of the heat extractor assemblies should cover the two(2) black out graphics installed from step 10). Apply even pressure all around perimeter to wet out tape fully. Repeat process for opposite side.



15. Open the hood and secure it with hood strut. Hand start (Use #6-32" socket) six(6) Hex Flange Nuts (37332) onto the heat extractor assembly studs from under the hood as shown below. Torque nuts (37332) to 1.5Nm.

Note: Over tightening can cause dimpling on face of extractor. Repeat process for opposite side.



16. Reinstall the factory hood blanket with the fourteen (14) push pins that were removed in Step 1.

Note: Push pin install locations - fourteen (14) red circled holes shown below.



17. Congratulations! You have now completed the installation of the ROUSH heat extractors.



