

POWERFLEX®

PART NUMBER

PFF19-1822

DESCRIPTION

LOWER TORQUE MOUNT BRACKET AND BUSH

INSTALLATION GUIDE

Contents (parts per pack):

2 x Polyurethane Bushes	1 x PTFE/Silicone Grease
1 x Stainless Steel Sleeve	1 x Anodised Aluminium Bracket
1 x M12 Flanged Bolt	1 x M12 Nyloc Flanged Nut

Please read the complete fitting instructions and check package components before fitment. These fitting instructions are to be used as a guide and in conjunction with workshop manual.

It is recommended that:

- all work to be carried out by a licensed technician;
- all safety precautions adhered to;
- wheel alignment to be checked and adjusted as required after any suspension work.
- All fasteners must be tensioned to manufacturer's torque settings.



Fitting Instructions:

1. Remove the original bush and bracket from the subframe and clean away any dirt and corrosion. Remember to keep the original bolt that secures that bush for later, to refit the new bracket and bush.
2. Insert the Polyurethane Bushes into the bore of the Anodised Aluminium Bracket, ensuring they both sit flush in the bore.
3. Apply some of the supplied grease to the outer surface of the Stainless Steel Sleeve, and insert it into the bore of the Polyurethane Bushes until it sits flush.
4. Insert the Assembly into the void the original bush was, and using the original bolt, refit the bracket and bush by inserting the bolt into the bolt of the sleeve and through the subframe of the car.
5. Refit the subframe to the rest of the car using the supplied M12 Flanged Bolt and the M12 Flanged Nyloc Nut, ensuring to tension all hardware to manufacturers recommended torque settings.

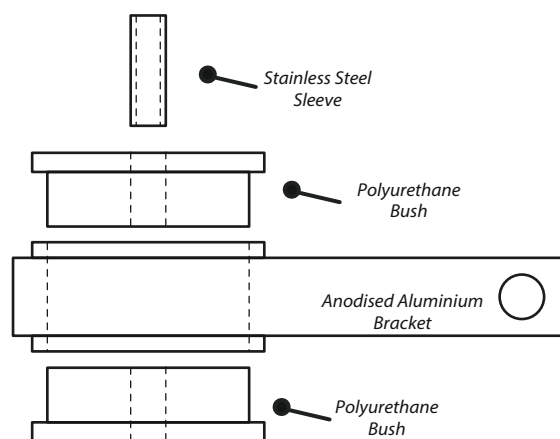


Figure 1 - Assembly

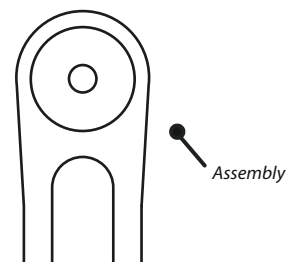


Figure 2 - Attaching to subframe