

INSTALLATION GUIDE:



**SINISTER
DIESEL**

Adjustable Track Bar

2003–2012 Dodge 5.9L/6.7L Cummins 4WD





DISCLAIMER

1) By installing this product onto your vehicle, you assume all risk and liability associated with its use.

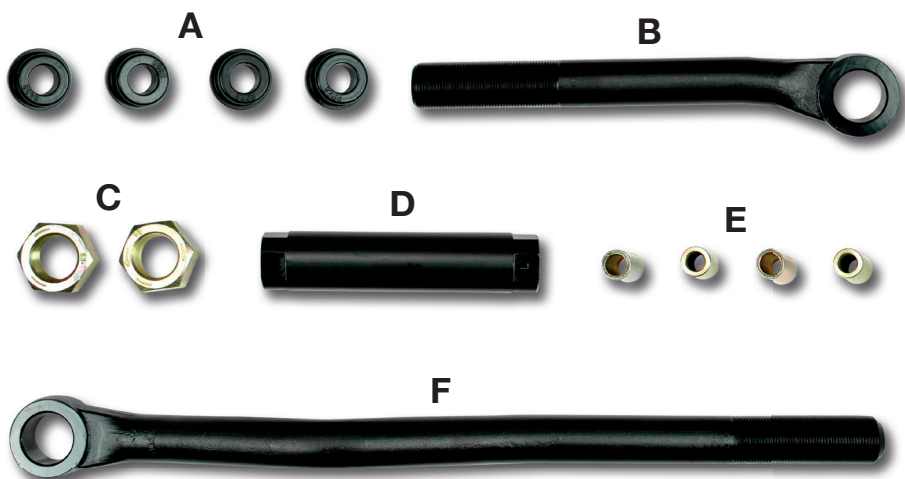
2) It is your responsibility to make sure your vehicle complies with all federal, state, and local emissions laws. Federal and many state and local laws prohibit the removal, modification or rendering in-operative of any part of the design affecting emissions or safety on motor vehicles used on a public street or highway. Violation may result in a fine of up to \$32,500 per vehicle (or possibly higher depending on changes in the law). All civil penalties and fines for removing your vehicle's emissions equipment are the sole responsibility of the end user.

3) Due to its high performance nature, this product may void vehicle manufacturer's warranty.

4) Sinister Mfg Company, Inc. is not responsible for misuse of its products. By installing this product, you release Sinister Mfg Company, Inc. of any and all liability associated with its use.

5) Depending on where you live, restrictions may apply. Check all applicable laws before installing or using!

6) The purchaser and end user releases, indemnifies, discharges and holds harmless Sinister Mfg Company, Inc. from any and all claims, damages, causes of action, injuries, or expenses resulting from or relating to the use or installation of this product that is in violation of the terms and conditions on this page, the product disclaimer, and/or the product installation instructions. Sinister Mfg Company, Inc. will not be liable for any direct, indirect, consequential, punitive, statutory, or incidental damages or fines caused by the use or installation of this product.



PART:	DESCRIPTION:	QTY:
A	Polyurethane Bushings	4
B	Trackbar, Passenger Side	1
C	Jam Nuts (one left hand thread)	2
D	Threaded Connector	1
E	16mm Brass Sleeves (not for 03-07)	4
F	Trackbar, Drivers Side	1

RECOMMENDED TOOLS:

- 18mm Socket/Wrench
- 2 1/16" Open End Wrench and/or Large Crescent Wrench
- Large Crescent Wrench (>1.5")
- Torque Wrench (>200 lbs-ft)

IMPORTANT: READ ALL INSTRUCTIONS PRIOR TO INSTALL. Prior to installation, please compare the parts that you have received with the bill of materials provided on this page to assure that you have all the parts necessary for the installation.



CAUTION !!! Never work on a hot vehicle. Serious injury in the form of burns can result if the vehicle has been in use. Allow vehicle to cool prior to installation. Always wear eye protection when working on or under any vehicle.

IMPORTANT: For your safety we recommend using extreme caution when working under any vehicle. Installation of the Sinister Diesel Track Bar requires suspension components to be removed. We highly suggest the vehicle be properly aligned following the installation of any new suspension or steering components.

1 Using jack stands, be sure to support both the chassis as well as the axle housing. Be sure axle doesn't move side to side once the track bar is removed.



IMAGE 1

2 Locate and remove upper bolt on track bar. (Image 1)

3 Locate and remove lower bolt on track bar. (Image 2)

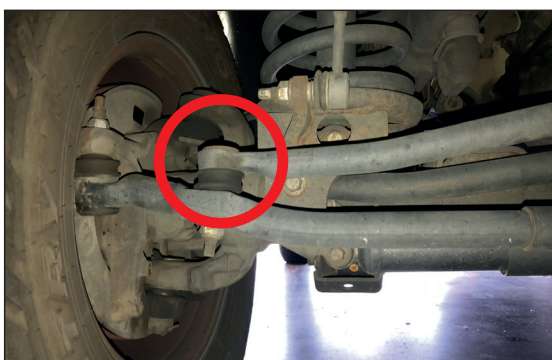


IMAGE 2

4 Install the new bushings into track bar ends. Depending on factory hardware size, choose correct bushing sleeves (Image 3)



IMAGE 3

- 5** With the factory bar removed, take measurements from hole center to hole center, and set the new bar at the same distance apart. (Image 4)



IMAGE 4

- 6** Use the supplied lubricant on the bushings before installation. Slide the new Sinister Diesel track bar into the pocket on the axle end and loosely install the bolt. (Image 5)



IMAGE 5

- 7** After lower bolt is loosely installed, push the track bar up, and into the upper pocket and install factory bolt. (Image 6)



IMAGE 6

- 8** Now that bolt bolts are loosely installed, lower the vehicle down. With the suspension loaded tighten bolts and adjuster jam nuts.

9 We highly recommend taking your truck to get an alignment before any on the road operation.

10 Enjoy your newly installed Sinister Diesel Adjustable Track Bar!



More Great Parts for Your Dodge Cummins!

SHOP SINISTERDIESEL.COM



STEERING BOX SUPPORT

End Dodge "death wobble" with this easy to install kit. Includes all necessary hardware. '94-'17 Cummins. **\$189**

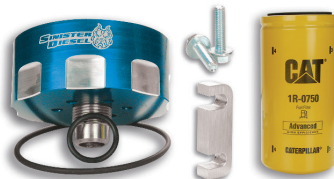


NEW! PITBULL SERIES TURBOS POWERMAX TURBOS

Our Series 1, 2, and 3 Sinister Edition turbos each have unique components and performance specs to suit your specific needs. **FROM \$1599**

CAT FUEL FILTER ADAPTER

This kit filters down to 2 microns saving vital engine components better than other systems. '01-'15 Duramax, '04-'07 Cummins. **\$129**



OIL FILTER KITS

Performance parts won't help if your oil is dirty. Keep your truck running it's best with a Sinister Oil Filter Kit. '06-'07 Cummins. **FROM \$300**

2018 SINISTER GEAR

Be the first to get your Sinister Gear! All new designs for this Summer.



SD-DODGE-TB-03-2018



#1 IN PERFORMANCE PARTS & KITS

2025 OPPORTUNITY DR. ROSEVILLE, CA 95678 SINISTERDIESEL.COM 877.692.4110