



STARTECH®

Fitting Instruction

Range Rover
2013

Wide Body
Part No.: LG-500-00




Fitting Instruction
online



STARTECH®

CRD GmbH & Co. KG
Brabus-Allee
D - 46240 Bottrop

Email: support@startech.de

 +49 (0) 2041 / 777 - 430

Member of the **BRABUS**® Group



STARTECH®

Fitting Instruction

Range Rover
2013

Wide Body
Part No.: LG-500-00

Please check the contents of the parts supplied prior to installation. STARTECH wide body, consisting of::

QTY:	Description:	Part-No.:
1	Front bumper add-on element left	LG-500-01
1	Front bumper add-on element right	LG-500-02
1	Fender attachment front left	LG-500-03
1	Fender attachment front right	LG-500-04
1	Door add-on element front left	LG-500-05
1	Door add-on element front right	LG-500-06
1	Door add-on element rear left	LG-500-07
1	Door add-on element rear right	LG-500-08
1	Fender attachment rear left	LG-500-09
1	Fender attachment rear right	LG-500-10
1	Rear bumper add-on element left	LG-500-11
1	Rear bumper add-on element right	LG-500-12
1	Mesh insert left	LG-500-13
1	Mesh insert right	LG-500-14
1	Cover fender add-on element left	LG-500-15
1	Cover fender add-on element right	LG-500-16
2	Adhesive	WU089002350

The product described in the instructions was developed, produced and checked considering the necessary safety requirements. In order to ensure a proper and safe function and to rule out danger for persons and objects, this product must be installed appropriately. Only trained, qualified staff, having the necessary technical experience and tools, should make the installation. Therefore you have to read and completely understand these instructions.



STARTECH®

Fitting Instruction

Range Rover
2013

Wide Body
Part No.: LG-500-00



Hint:

Check the exact fitment of the wide body attachment prior to assembly, re-work, if necessary.

Take care of sufficient cleanliness while assembly!



STARTECH®

Fitting Instruction

Range Rover
2013

Wide Body
Part No.: LG-500-00

Hint for bonding

All parts can be bonded by using the provided adhesive, but also by using PU-windscreen adhesive in connection with primer.

When using our adhesive all adherend of the add-on element to be sanded and afterwards cleaned and degreased.

We recommend to use windscreen adhesive (e.g. Würth, „Rapid“, part no.: WU089002350) in connection with acetone (e.g. Würth, part no.: WU0893460) and primer (e.g. Würth, part-No.: WU08900245). After cleaning with acetone use the primer, ideally with brushes (e.g. Würth, part-no.: WU0891650) to clean the adherend on the vehicle and add-on element. (filling in just one direction, then allow evaporation!).

Apply an appropriate adhesive bead on the adherend and bond the part to the vehicle. Take care of sufficient space for the water drain when fitting the lower attachment elements.

When cleaning the adhesive waste we recommend to use K+D cleaner (e.g.: Würth, part-No.: WU089010063). For fixing of the parts until hardening we recommend to use trim clamps (e.g. Würth, part-No.: WU069155210).

Take care not to use any primer in visible adherend area once the part is fitted. Primer to be filled in a distance of about 5mm to the mark!

Take care of the bonding advice and ensure all adherend are clean and degreased before bonding! Before bonding clean-up the adherend from paint spray!



STARTECH®

Fitting Instruction

Range Rover
2013

Wide Body
Part No.: LG-500-00

1. Preparation:

Remove the original parts according to the Land Rover fitting instruction.
Next to handle the door add-on elements passenger side:

1. Fender attachment front right (Fig 1)
2. Door add-on element front right (Fig 1)
3. Door add-on element rear right (Fig 2)

All yellow marked parts are used in next step.



Fig 1

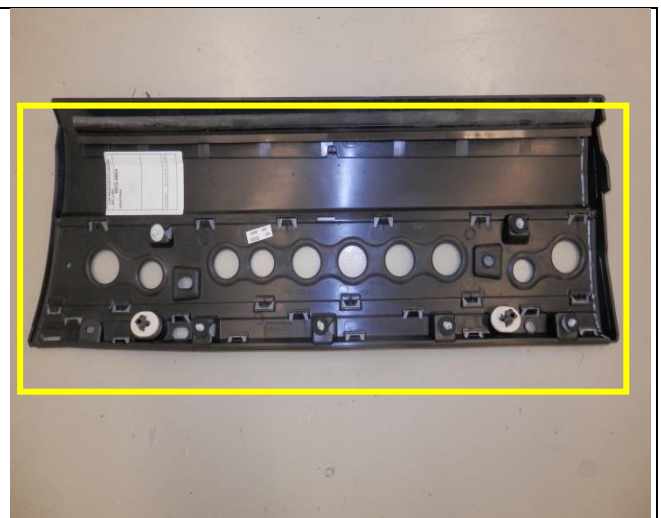


Fig 2

2. The cover for right fender add-on element cut on upside and rear according to fig 3 and subsequently mounted again. Make the cut out according to the image direct at the end of the rubber strip on the bottom (see 3 yellow arrow heads) and cause no damage.

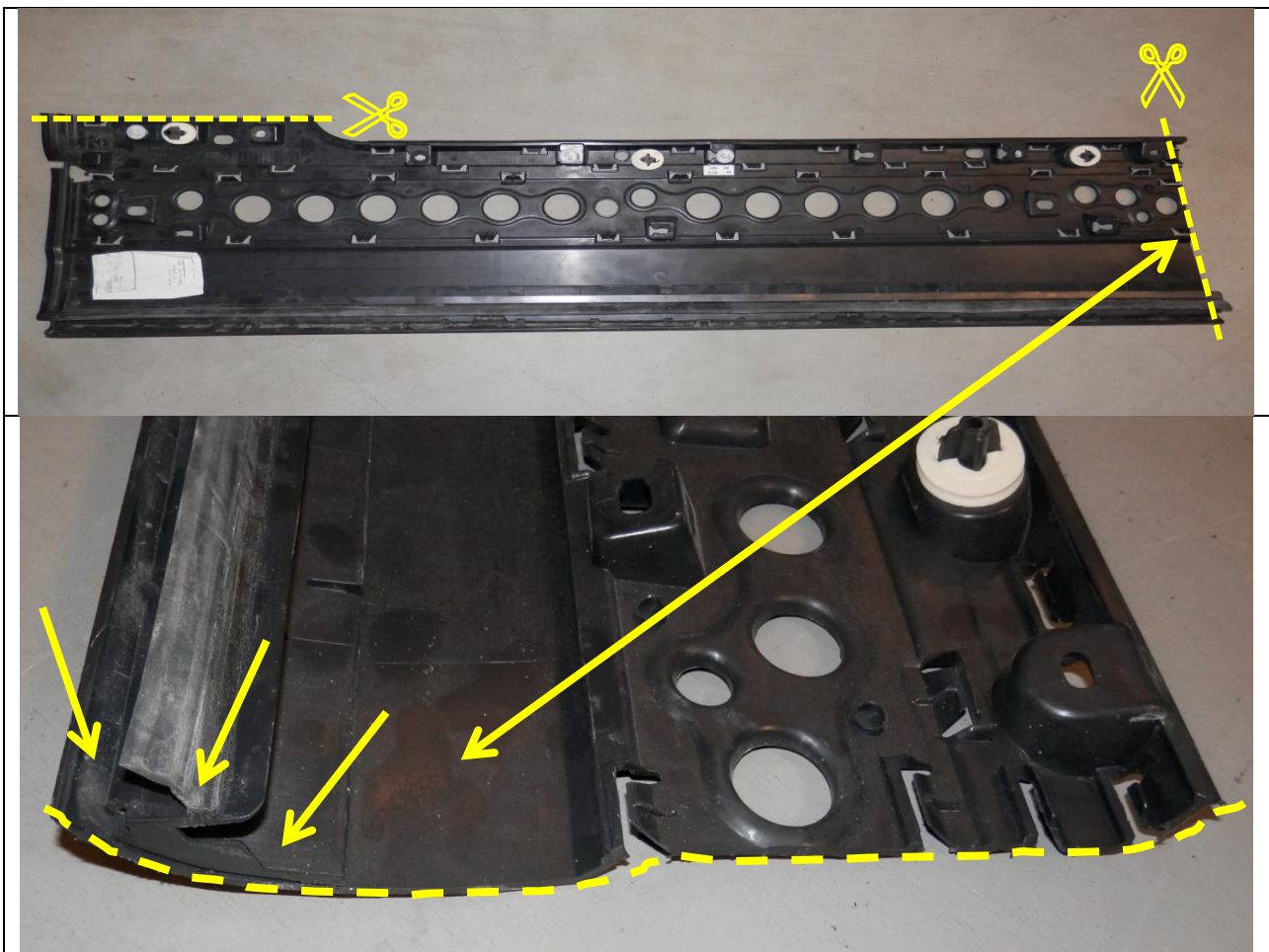


Fig 3



STARTECH®

Fitting Instruction

Range Rover
2013

Wide Body
Part No.: LG-500-00

Make the upside cut-out above the mounting clips according to fig 4

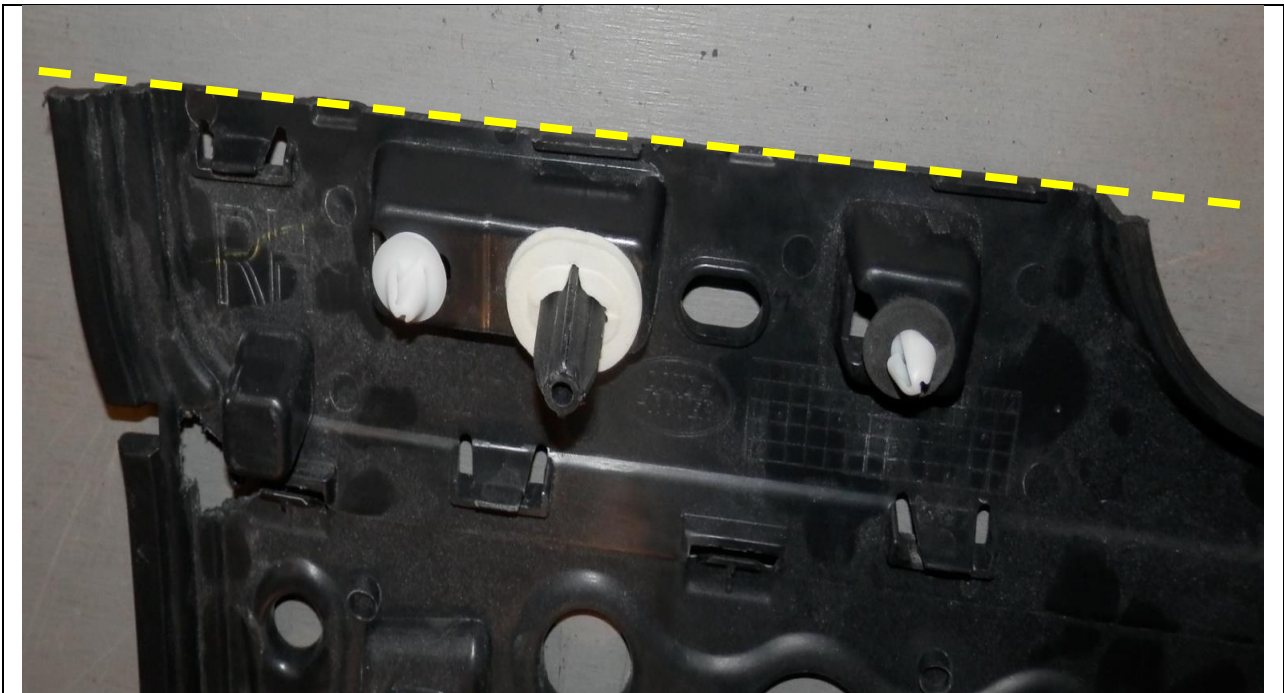


Fig 4



STARTECH®

Fitting Instruction

Range Rover
2013

Wide Body
Part No.: LG-500-00

3. Cut the door add-on element rear at the front according to fig 5 and afterwards mount again. Make the cut at the beginning of the rubber strip which is fixed on the bottom (3 arrow heads) and ensure no damage.

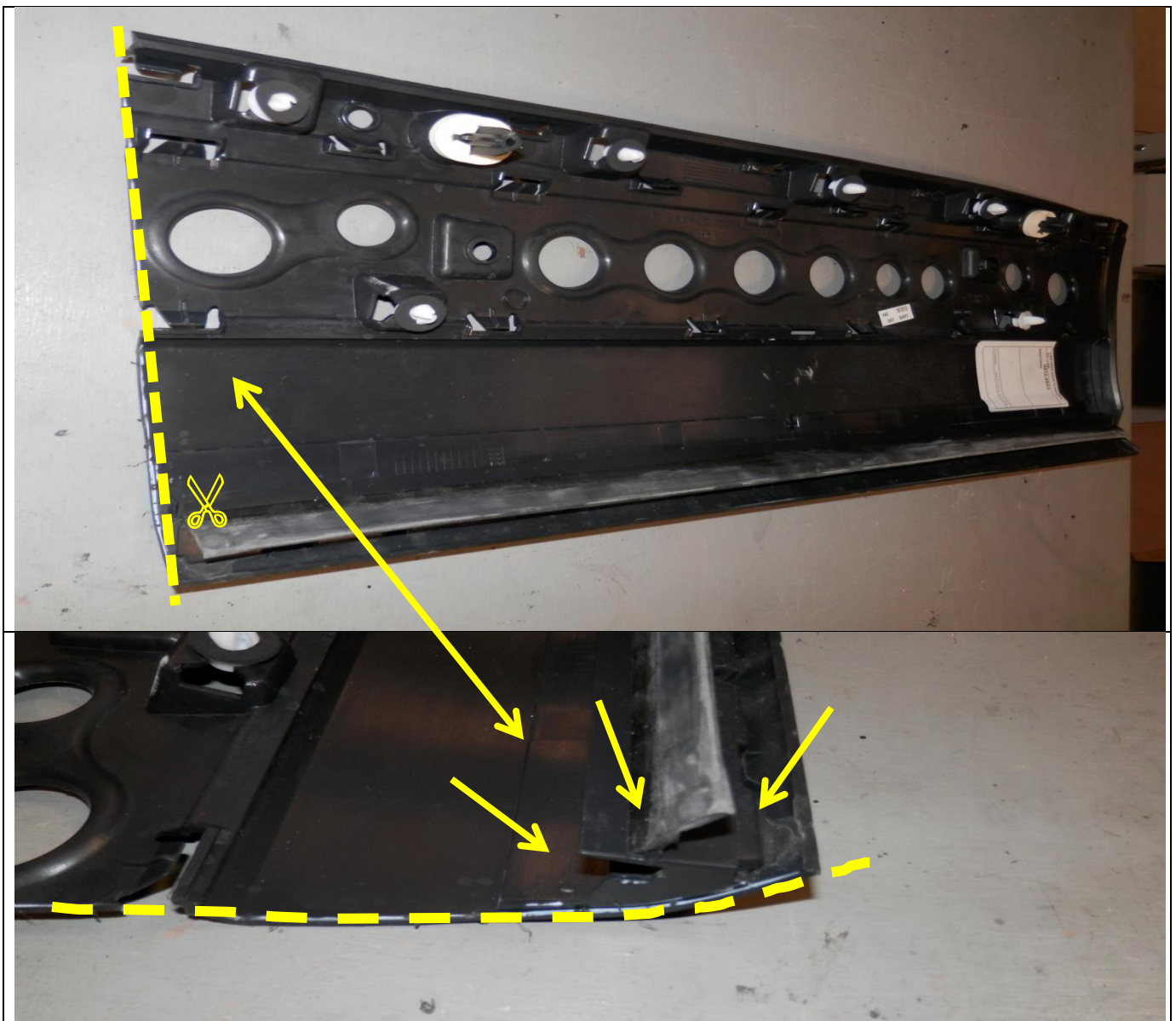


Fig 5



STARTECH®

Fitting Instruction

Range Rover
2013

Wide Body
Part No.: LG-500-00

4. Align the wide body parts to the vehicle and mark the profile of the add-on elements by using a washable marker.



Fig 6

Prepare for bonding the adhered on the vehicle and the add-on elements according to our hints on page 4.

5. Adjust the front add-on elements (fig 7) LG-500-02/1 onto our Startech front bumper and mark the area for the outer PDC sensors accordingly. (fig 8)



Fig 7

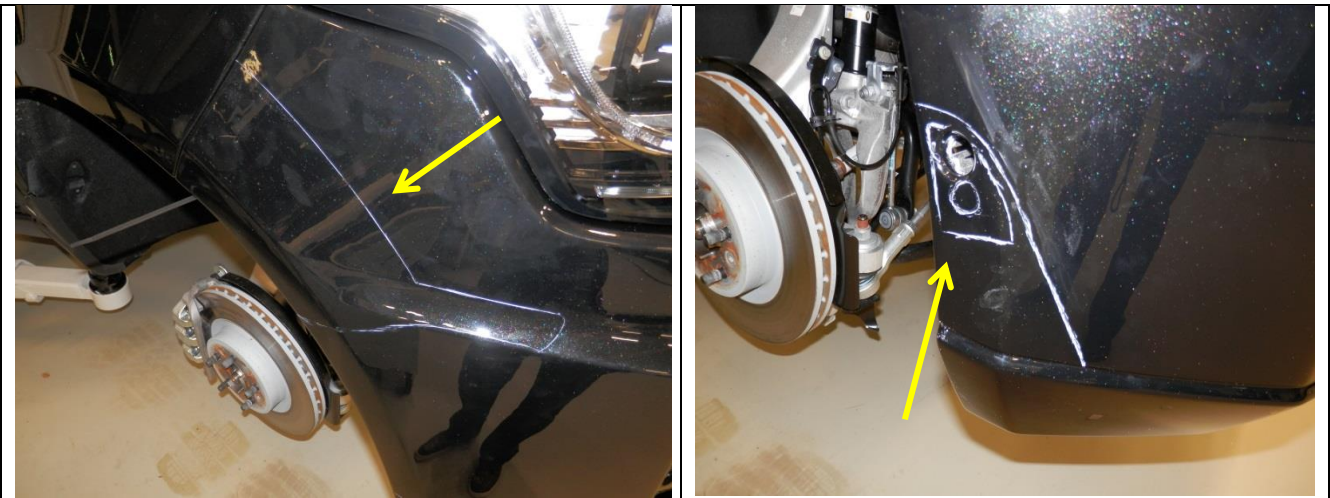


Fig 8

Cut the connection of the PDC sensors by using an appropriate tool according to fig 8/9.

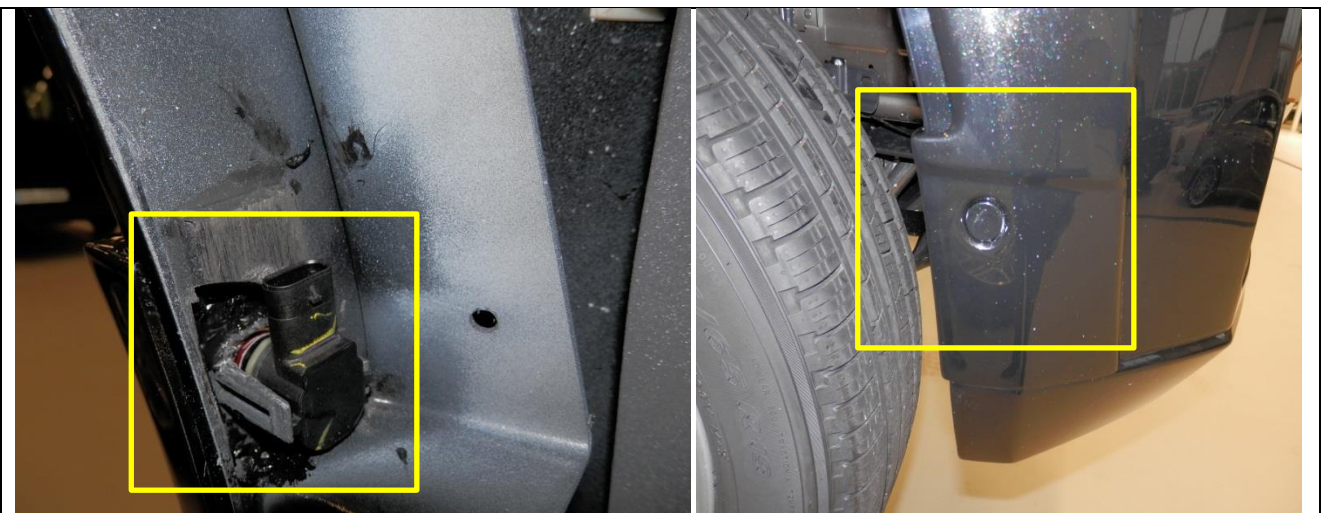


Fig 9



STARTECH®

Fitting Instruction

Range Rover
2013

Wide Body
Part No.: LG-500-00

6. Don't use adhesive in a small area (3 cm) on the edge of each door add-on element to ensure a water drain (Fig 10).

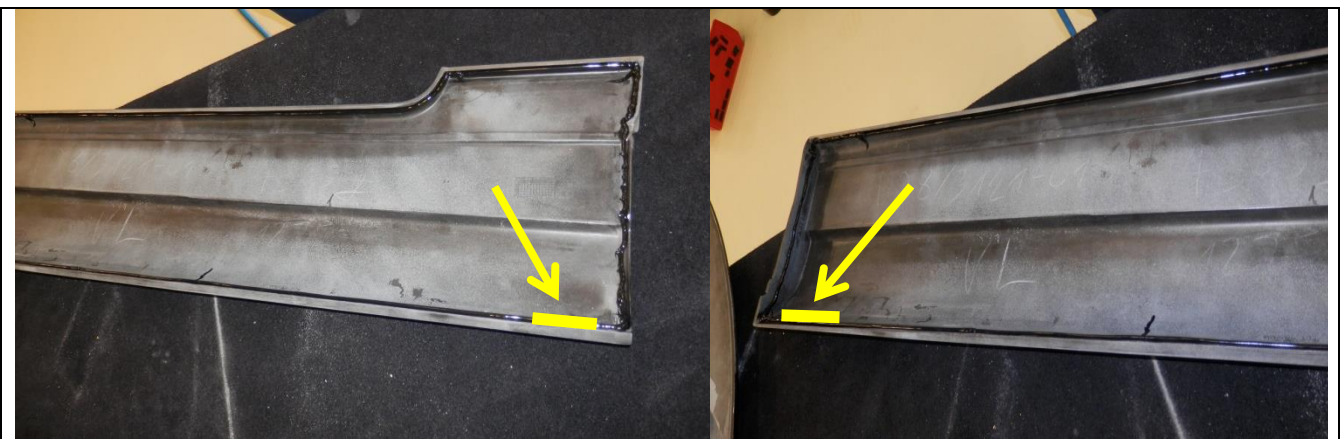


Fig 10



STARTECH®

Fitting Instruction

Range Rover
2013

Wide Body
Part No.: LG-500-00

7. Fill a plain adhesive bead onto the add-on elements align those and fix by using adhesive tape and trim clamps until the adhesive is dry. Remove adhesive waste immediately!

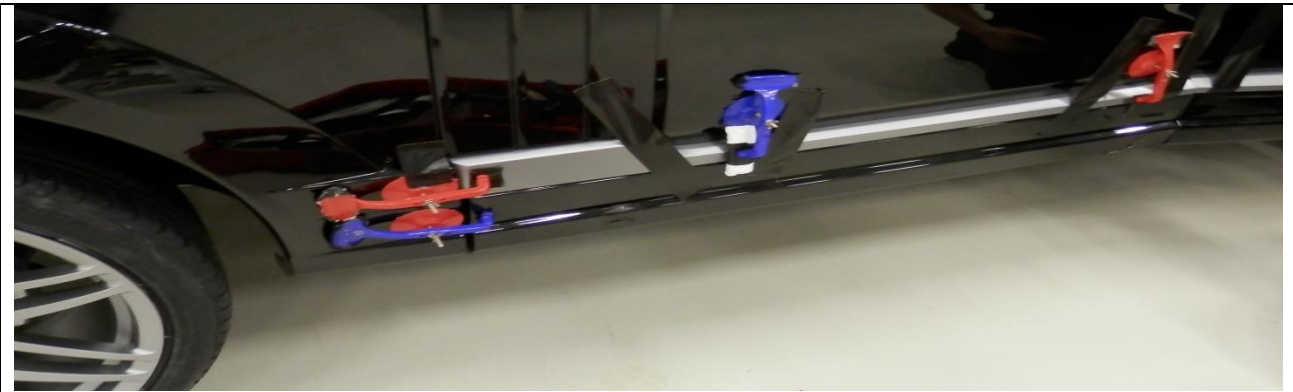


Fig 11

8. After the front add-on element is bonded, mount the front insert.



Fig 12

9. Rear bumper add-on element fig 13: Remove the adhesive tape, align the add-on element and mount to the vehicle.



Fig 13

10. After all parts are fitted, bond the mesh insert in the rear.



Fig 14