



780 Professional Drive N. Shreveport, LA 71105 Phone (318)-524-2270 Fax (318)-524-2297
www.highlifter.com

Suzuki 400 Lift Kit Installation Instructions

Read before Installation

This product is designed for use on ATVs and/or RUVs to increase ground clearance and fender clearance. Purchasers should be aware that use of this product may increase the frequency of required maintenance, part wear, and will raise the center of gravity on your ATV and/or RUV, increasing risk of roll-over, injury and death on all types of terrain. It is your responsibility to always inform other operators and passengers of this vehicle about the added risks.

High Lifter Products, products are designed to best fit users ATV/RUV under stock conditions. Adding, modifying, or fabricating any OEM or aftermarket parts will void warranty. High Lifter Products, products could interfere with other aftermarket accessories. If the user has aftermarket products on machine, contact High Lifter Products to verify that they will work together. Adding aftermarket suspension components and/or more aggressive tires can cause breakage of other OEM driveline components such as differentials, axles or drive shafts.

We recommend that wider tires and/or wheel spacers be used to achieve a wider stance and to improve stability of the ATV and/or RUV. Riders should be advised that the handling characteristics of a taller ATV and/or RUV are different and require extra care when riding, particularly on side hills or off-camber situations. If you further raise the center of gravity by adding taller tires, heavy loads to racks or seats, or by any other means, the ATV and/or RUV must be operated with even more care, at slower speeds and on relatively flat ground. All turns should be done at a slow speed, even on level ground.

Operation of an ATV and/or RUV with or without modified suspension components, while or shortly after consuming alcohol or drugs, subjects the rider to the risk of serious bodily harm or possible death. This risk is compounded if the rider does not wear an approved helmet and other safety gear. High Lifter urges that all approved safety gear be worn when riding an ATV and/or RUV as a driver or passenger.

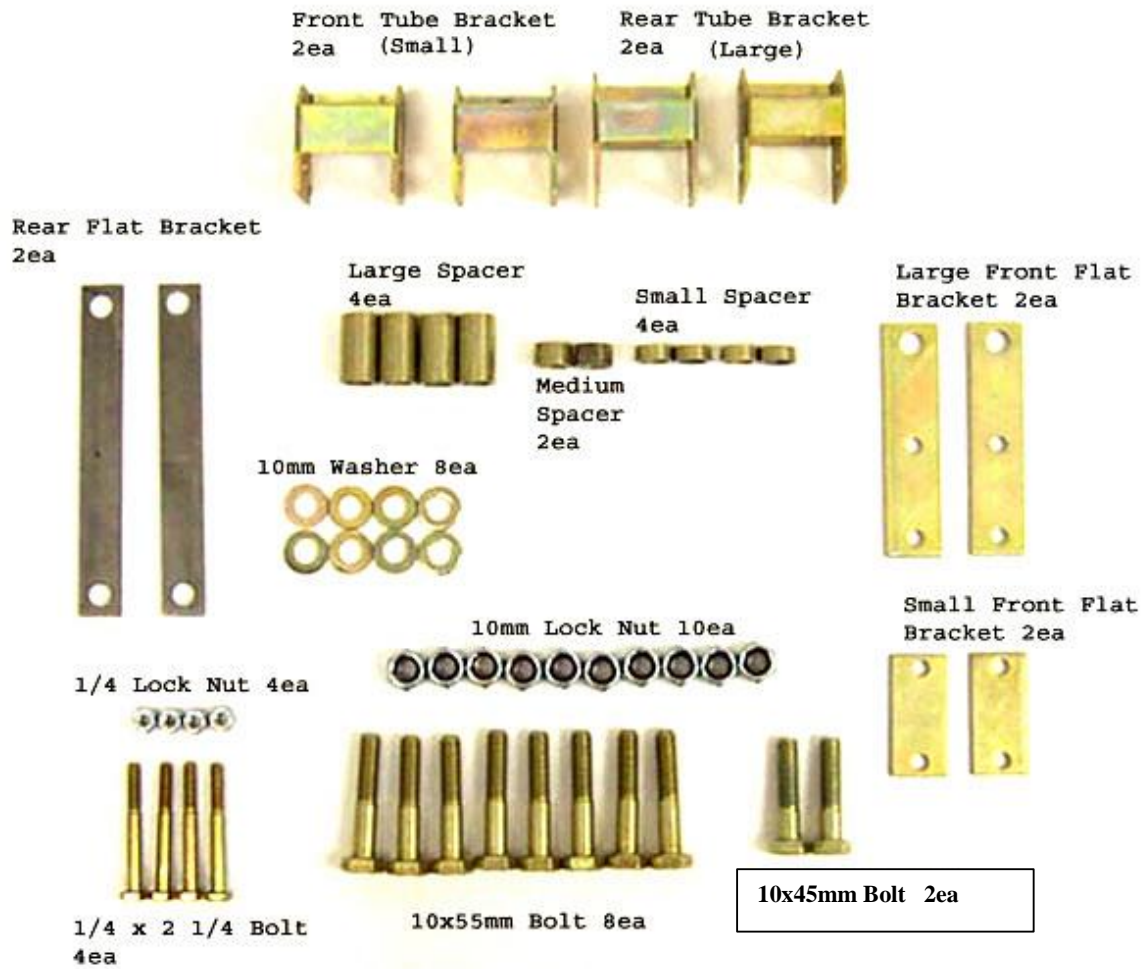
By purchasing and installing High Lifter Products, products, user agrees that should damages occur, High Lifter Products will not be held responsible for loss of time, use, labor fees, replacement parts, or freight charges. High Lifter Products will not be held responsible for any direct, indirect, incidental, special, or consequential damages that result from any product purchased from High Lifter Products. The total liability of seller to user for all damages, losses, and causes of action, shall not exceed the total purchase price paid for the product that gives rise to the claim.

Dealers and other Installers

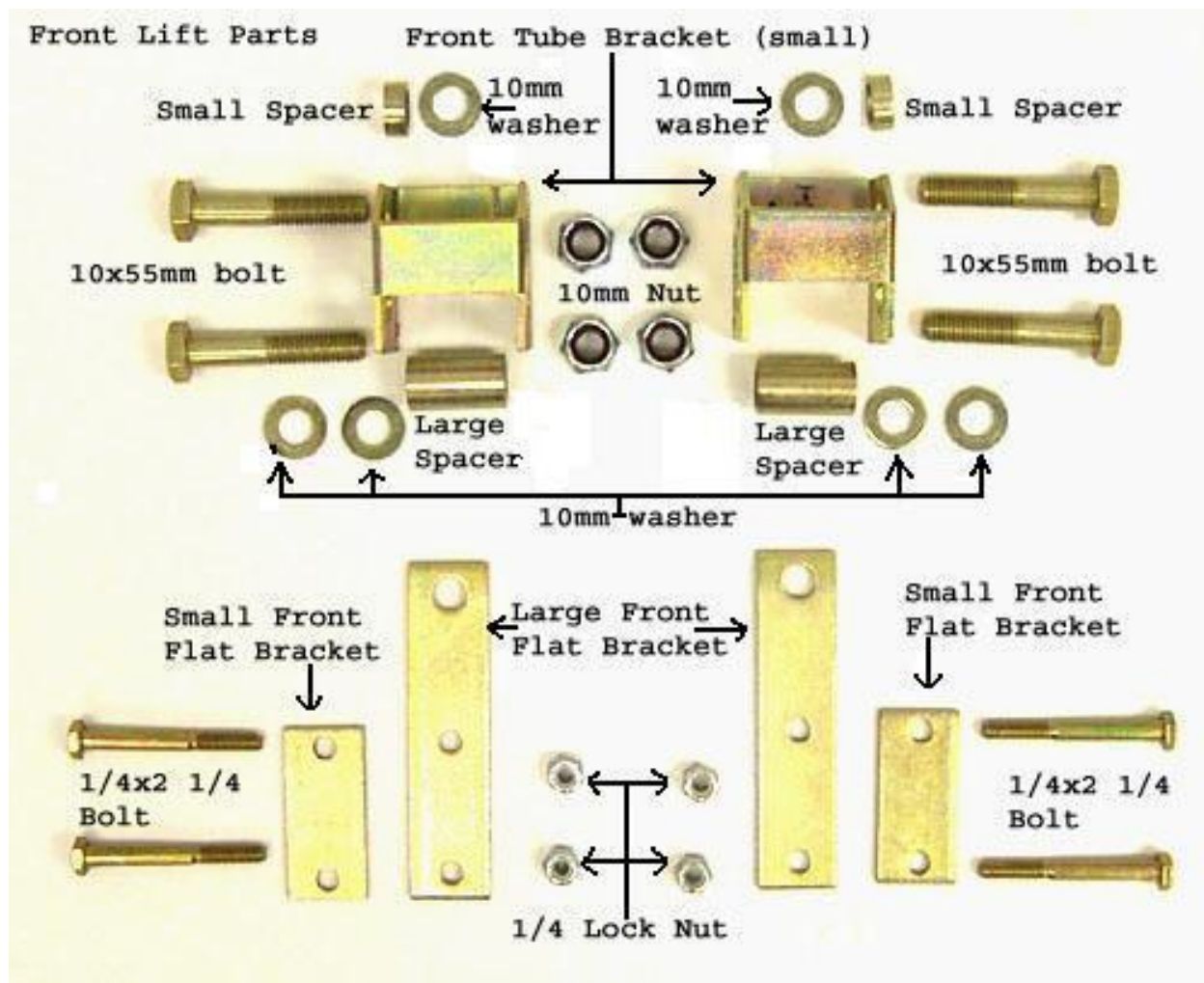
You are responsible for informing your customer and end user of the information contained above and the increased potential hazards of operating an ATV and/or RUV equipped with modified suspension components. If you install any suspension modifying components, it is your responsibility to also install the warning label prominently in view of the driver and in prominent view of the driver and passenger on RUVs and multi-passenger ATVs. They should also be instructed to notify anyone operating the vehicle, as well as any passengers, that said vehicle is modified.

As discussed above, it is critically important that they be instructed in the need for slower speed operation, regardless of terrain, after this lift kit is installed.

Parts Diagram



Front Lift Parts Diagram and Instructions



****Note**** Sides of the ATV are described as if sitting on the ATV.

1. Place jack under center of the ATV front end and lift until front wheels clear the ground. Be careful to support ATV properly so that it's secure, but so that the A-arms and shocks can droop to full extension.
2. Remove front wheels and shocks.
3. Place Front Tube Bracket (small) onto shock mount. Make sure that the angle side is facing to the inside of the ATV.
4. Put large spacer into the shock mount.
5. Now insert the 10x55mm bolt into the brackets, aligning the holes, BUT do not go all the way through. Between the shock mount and the inside of the bracket that is facing the front of the ATV insert two 10mm washers.
6. Push bolt through fasten tight with the 10mm lock nut.
7. Place the bottom of the shock into the top of the Front Tube Bracket. Position the shock, so that it is on the inside of the tube bracket so that is flush against the side of the bracket that is facing the rear.
8. Place the Large Front Flat bracket, on the side of the tube bracket that is facing the rear, with the large hole end next to the tube bracket.
9. Insert the 10x55mm bolt, starting from the side that is facing the rear. Do not go all the way through. Between the shock and the inside of the tube bracket insert a 10mm washer and small spacer. The washer needs to be between the small spacer and shock.
10. Finish pushing the bolt through and fasten tight with the 10mm lock nut. Reattach the top of the shock to the ATV.
11. Secure the Large Front Bracket to the ATV's A-arm, by inserting the two 1/4 x 2 1/4 bolts and positioning the A-arm between them. Insert the bolts from the side of the bracket that is facing the rear.
12. Place the Small Front Flat Bracket onto the two 1/4" x 2 1/4" bolts and fasten tight with two 1/4" lock nuts.
13. Repeat steps for opposite side. **Torque all bolts to factory specifications.** Place wheels on AVT and lower jack.

Front Lift Illustrations



Illustration 1

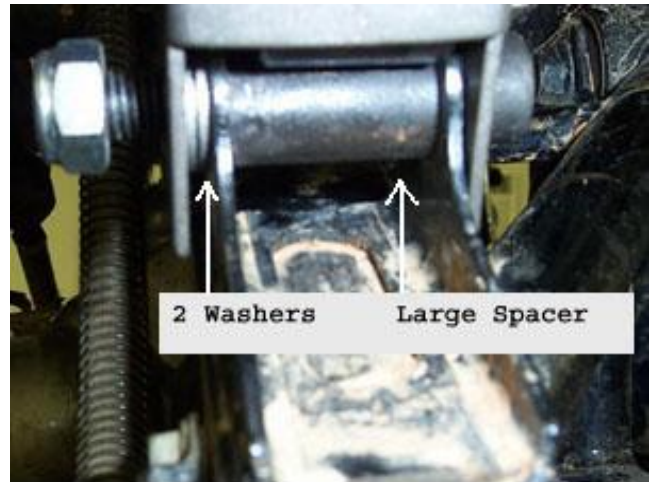


Illustration 2

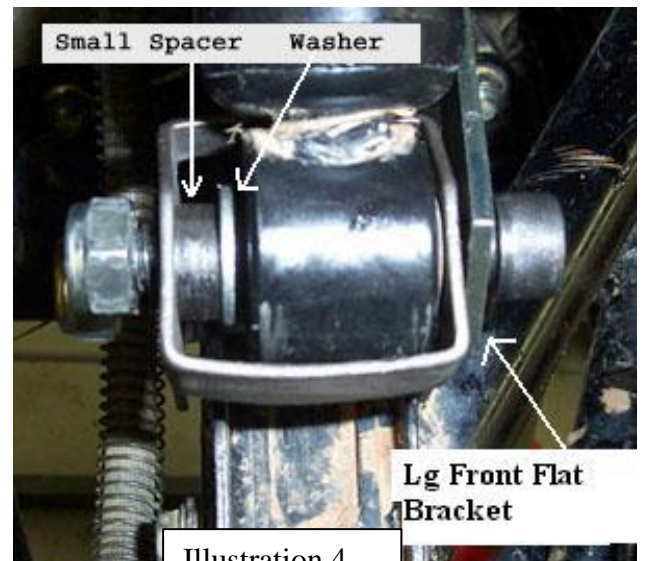


Illustration 4

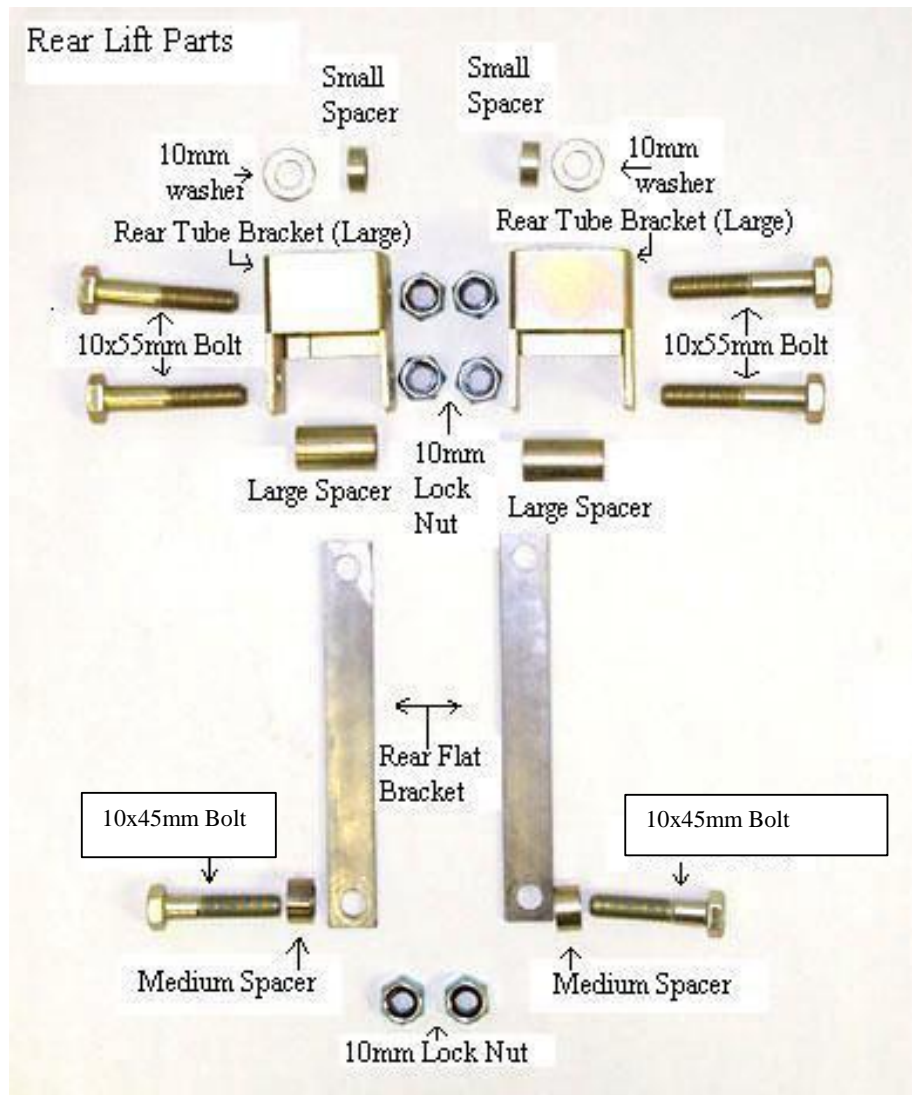


Illustration 5



Illustration 6

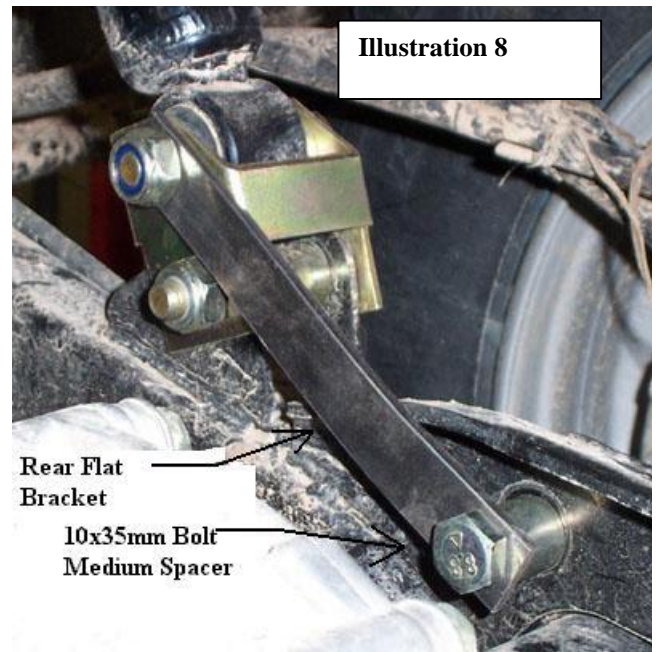
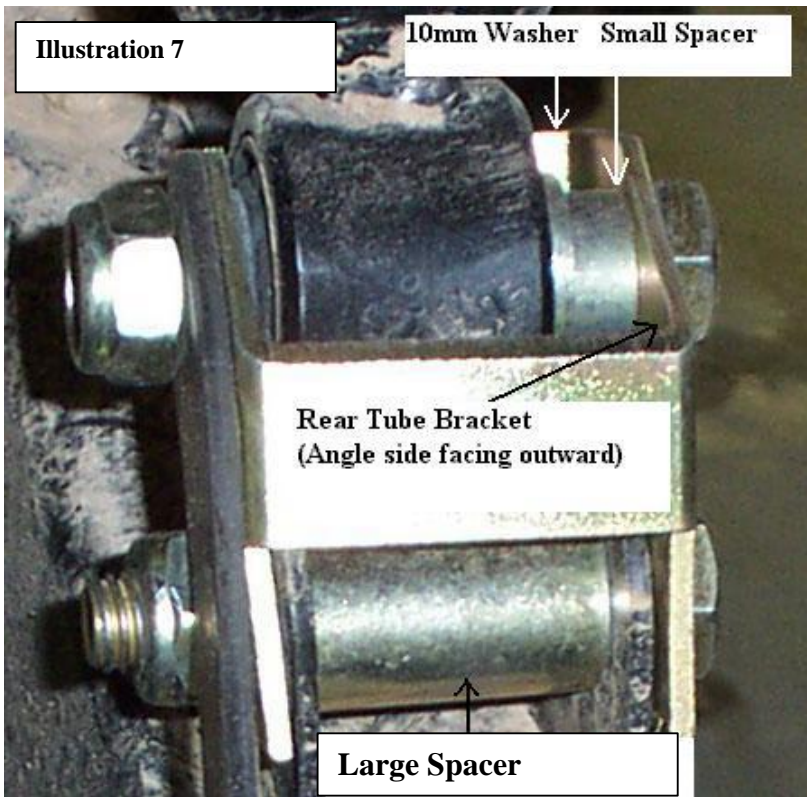
Rear Parts Diagram and Instructions



****NOTE**** The rear lift is put on as if you are facing the rear of the ATV.

1. Place jack under the center of the ATV, (Not the rear axle) and lift until the weight is off the suspension. Be careful to secure the ATV properly so as not to fall off of the jack.
2. Remove wheels and both rear shocks, then jack ATV up 2 more inches.
3. Place the Rear Tube Bracket (Large) onto the shock mount with the angle side facing to the rear of the ATV. (Illustration 7)
4. Place the Large Spacer between the two bolt holes on the shock mount and secure the bracket to the shock mount with the 10x55mm bolt and 10mm lock nut. (Illustration 7)
5. Place the shock into the tube bracket, sliding it towards the inside of the bracket. (Illustration 7)
6. Insert the 10mm washer and small spacer. Be sure that the washer is between the shock and small spacer. (Illustration 7)
7. Secure the shock, washer, and small spacer with the 10x55mm bolt, sliding it from the outside (the side next to the wheel) towards the inside of the ATV. Do not install the lock nut!
8. Once the bolt is all the way through, place the Rear Flat Bracket onto the portion of the bolt that is to the outside of the tube bracket. Now secure it to the ATV using the 10mm Lock Nut.
9. Attach the bracket to the swing arm by removing the OEM bolt and replacing with the 10x45mm Bolt, Medium Spacer and securing it with a 10mm Lock Nut. (Illustrations 8 & 9)
10. Repeat steps for opposite side. (For completed view of rear mount see Illustrations 10 & 11)
11. Once complete, place wheels back on ATV and lower jack.

Rear Lift Illustrations



Thank You

For choosing





High Lifter Lifetime Warranty

From the beginning, High Lifter has engineered and manufactured some of the toughest, most durable products on the market. That's why this product comes with a Lifetime Warranty. It's our promise that High Lifter will never let you down.

- The **Lifetime Warranty** covers products sold to the original purchaser only and is not transferable. The term of the warranty is for the lifetime of the vehicle in question.
- Normal wear and tear items and finishes, such as, but not limited to: Heim joints, tie rod ends, ball joints, bearings, seals, bushings, bushing sleeves, zinc plating , powder coating, or chipping and discoloration of any finish is not covered.
- High Lifter will ship the replacement product after the returned product has been inspected by High Lifter staff.
- The warranty shall not include claims for damages, installation time or labor charges, economic losses, inconvenience, transportation, towing, down time, direct or indirect or consequential damages or delay resulting from any defect.
- The warranty does not apply to products that have been improperly applied or improperly installed.

Making a warranty claim

1. All claims must be accompanied by the part and the original sales receipt or other acceptable proof of purchase from the original owner.
2. All warranties must be accompanied with a Return Merchandise Authorization (RMA) number. (Contact High Lifter at 318-524-2270 or 800-699-0947 for an RMA number)
3. When shipping the damaged product:
 - a. Write the RMA number on the outside of the box.
 - b. Also include the RMA number, proof of purchase and any notes inside the box.
 - c. Please keep your tracking number and shipment information.
4. The customer is responsible for shipping the product to High Lifter--return shipping within the lower 48 states will be paid by High Lifter products. With all warranty claims, only standard shipping services apply.
5. High Lifter will process your order within 24 business hours of receiving the returned item.
6. **Ship to:** High Lifter Products, 780 Professional Drive North, Shreveport, Louisiana 71105