



780 Professional Drive N. Shreveport, LA 71105 Phone (318)-524-2270 Fax (318)-524-2297

***Thank you for purchasing a High Lifter Lift Kit***



***Please check out our other product lines:***

- ***Big Lifts***
  - ***Control Arms***
  - ***Trailing Arms***
  - ***Snorkels***
  - ***Radiator Relocation Kits***
- and many more...***



***Follow Us:***



***@ HighLifterATV***



***@highlifter***



***@HighLifter***



***@highlifterinc***

***Need Help? Contact Us***

***Mon-Fri 8am - 5pm CST***

➤ ***sales@highlifter.com***

➤ ***800-699-0947***

### **Read before Installation**

This product is designed for use on ATVs and/or RUVs to increase ground clearance and fender clearance. Purchasers should be aware that use of this product may increase the frequency of required maintenance, part wear, and will raise the center of gravity on your ATV and/or RUV, increasing risk of roll-over, injury and death on all types of terrain. It is your responsibility to always inform other operators and passengers of this vehicle about the added risks.

High Lifter Products, products are designed to best fit users ATV/RUV under stock conditions. Adding, modifying, or fabricating any OEM or aftermarket parts will void warranty. High Lifter Products, products could interfere with other aftermarket accessories. If the user has aftermarket products on machine, contact High Lifter Products to verify that they will work together. Adding aftermarket suspension components and/or more aggressive tires can cause breakage of other OEM driveline components such as differentials, axles or drive shafts.

We recommend that wider tires and/or wheel spacers be used to achieve a wider stance and to improve stability of the ATV and/or RUV. Riders should be advised that the handling characteristics of a taller ATV and/or RUV are different and require extra care when riding, particularly on side hills or off-camber situations. If you further raise the center of gravity by adding taller tires, heavy loads to racks or seats, or by any other means, the ATV and/or RUV must be operated with even more care, at slower speeds and on relatively flat ground. All turns should be done at a slow speed, even on level ground.

Operation of an ATV and/or RUV with or without modified suspension components, while or shortly after consuming alcohol or drugs, subjects the rider to the risk of serious bodily harm or possible death. This risk is compounded if the rider does not wear an approved helmet and other safety gear. High Lifter urges that all approved safety gear be worn when riding an ATV and/or RUV as a driver or passenger.

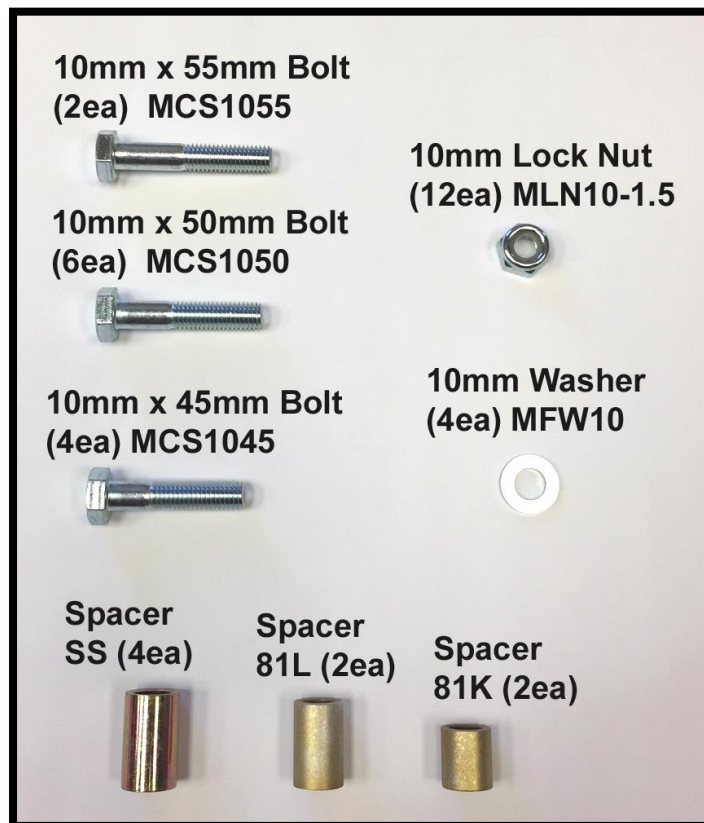
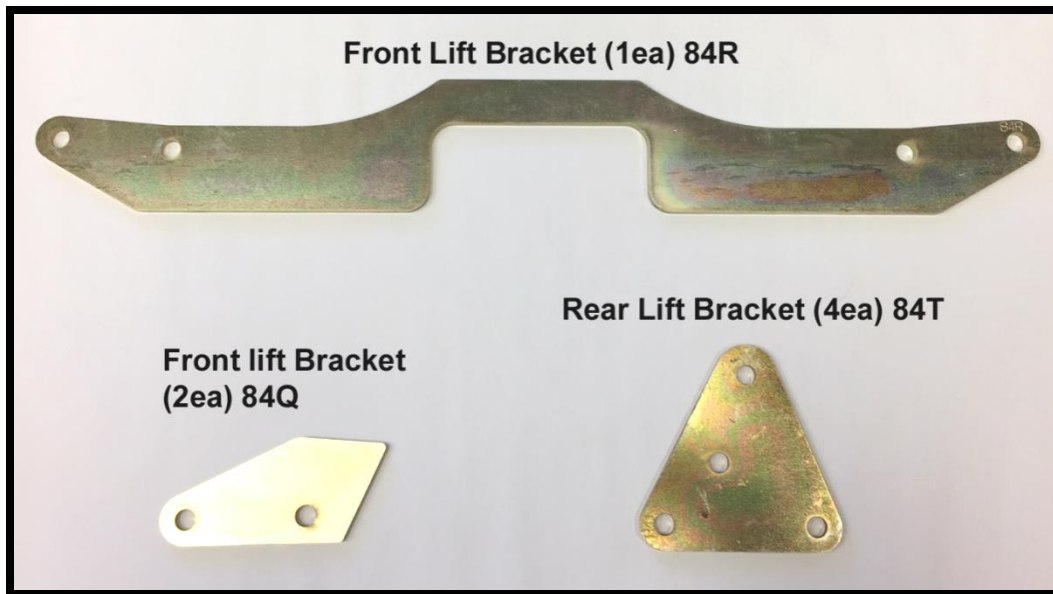
By purchasing and installing High Lifter Products, products, user agrees that should damages occur, High Lifter Products will not be held responsible for loss of time, use, labor fees, replacement parts, or freight charges. High Lifter Products will not be held responsible for any direct, indirect, incidental, special, or consequential damages that result from any product purchased from High Lifter Products. The total liability of seller to user for all damages, losses, and causes of action, shall not exceed the total purchase price paid for the product that gives rise to the claim.

### **Dealers and other Installers**

You are responsible for informing your customer and end user of the information contained above and the increased potential hazards of operating an ATV and/or RUV equipped with modified suspension components. If you install any suspension modifying components, it is your responsibility to also install the warning label prominently in view of the driver and in prominent view of the driver and passenger on RUVs and multi-passenger ATVs. They should also be instructed to notify anyone operating the vehicle, as well as any passengers, that said vehicle is modified.

As discussed above, it is critically important that they be instructed in the need for slower speed operation, regardless of terrain, after this lift kit is installed.

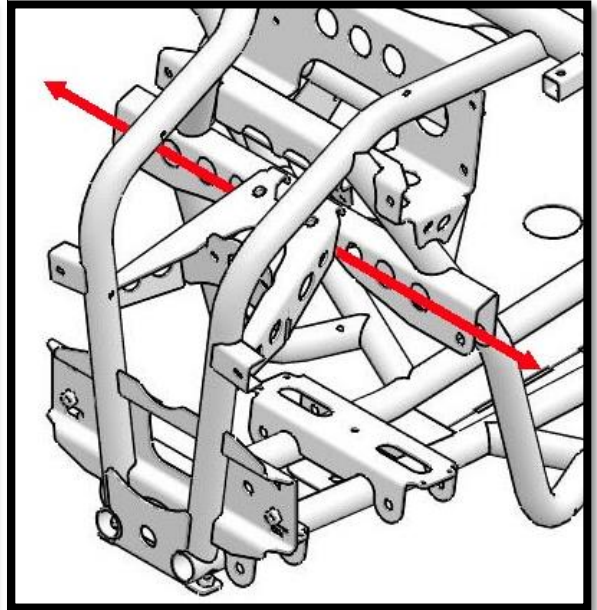
# Parts Diagram



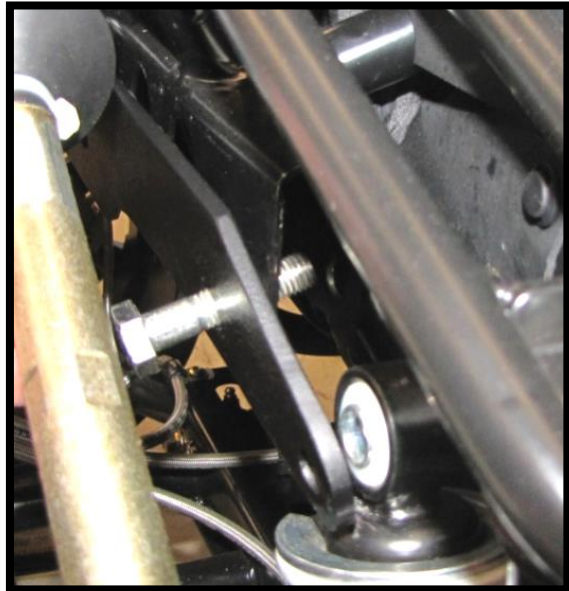
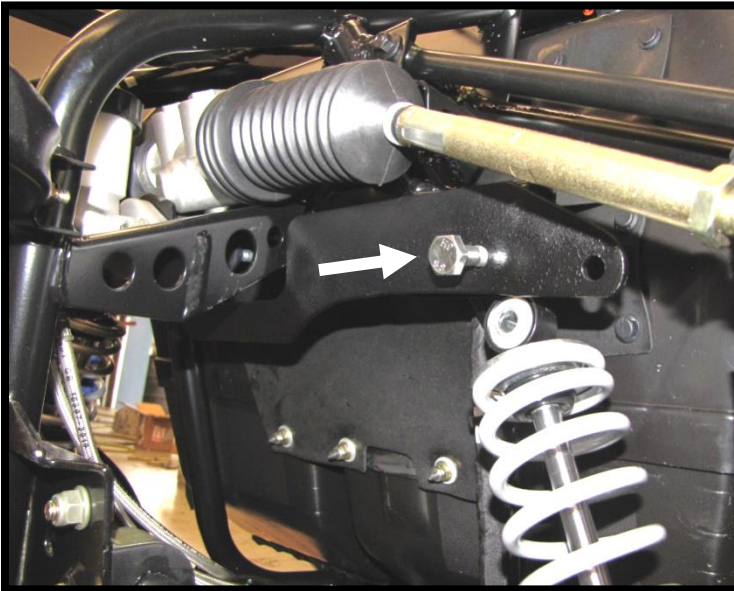


## FRONT LIFT INSTALLATION

1. Place UTV transmission in park. Place a jack under the center of UTV front end and lift until front wheels clear the ground. Be careful to support ATV properly so that it is securely supported so that A-arms and shocks can droop to full extension. Remove the front wheels.
2. Disconnect the top of both front shocks from the frame.
3. Insert the long front lift bracket (**84R**) into the frame starting from the driver side of the UTV. Insert the bracket so that it sits to the outside of shock mount tabs. Also, insert the bracket with the notched side down, the notch is designed to clearance the bracket from the center frame support.

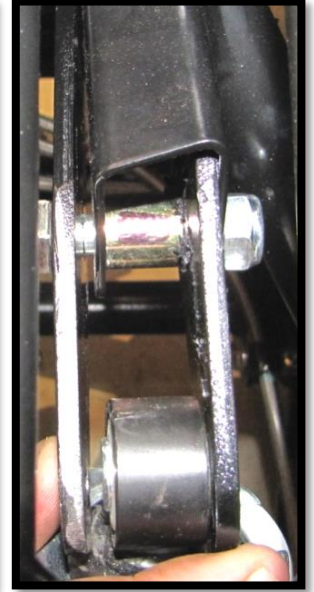


4. Next, insert a (**10mm x 45mm bolt**) through the large front lift bracket and outer shock mount tab.

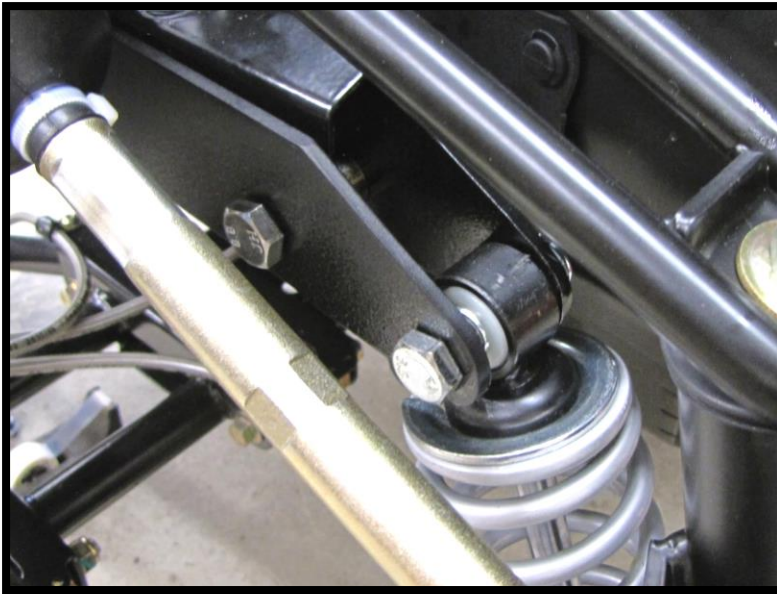




5. Insert the spacer **(81K)** between the shock mount tabs then push the bolt through the spacer. Now slide a small front lift bracket **(84Q)** between the spacer and inner shock mount tab. Insert the bolt all the way through and loosely fasten it with a **(10mm lock nut)**.



6. Next, connect the top of the shock to the new lift brackets. Insert a **(10mm x 45mm bolt)** through the brackets and shock eye, then loosely fasten it with a **(10mm lock nut)**.

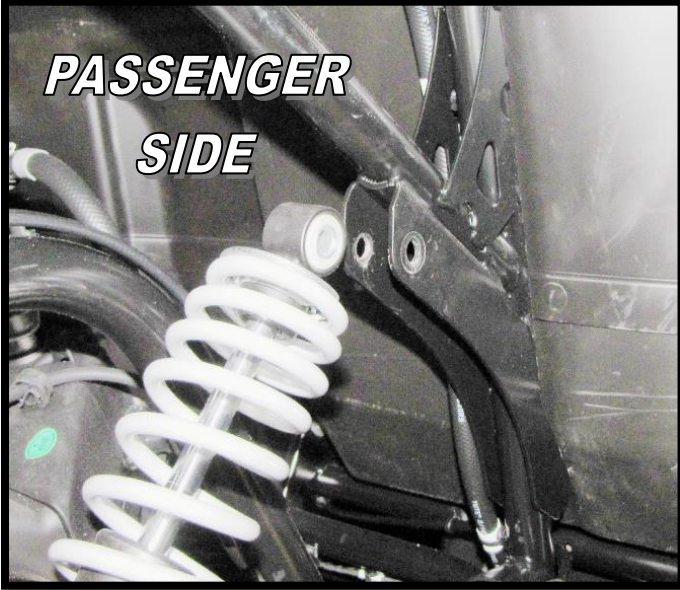


7. Repeat the same steps for the opposite side and then fasten all nuts and bolts tight.

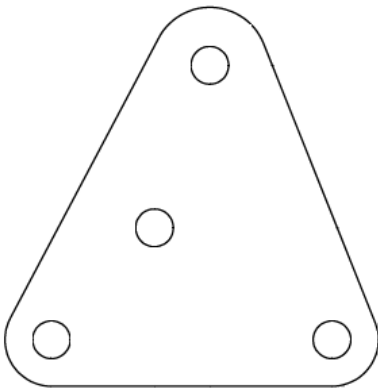


## REAR LIFT INSTALLATION

1. Place jack under the center of the UTV and lift until the weight is off the suspension. Be careful to secure the UTV properly so it is stable on the jack.
2. Remove the rear wheels.
3. Starting on the passenger side, disconnect the top of the shock from the UTV.

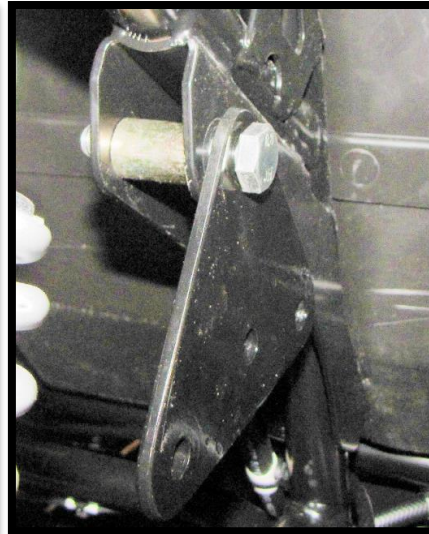


4. Place the rear lift bracket (**84T**) to the outside of the outer shock tab. Use the picture below as reference on how it will be installed. Now insert a (**10mm x 55mm bolt**) into the lower right hole of the bracket and through the shock tab.

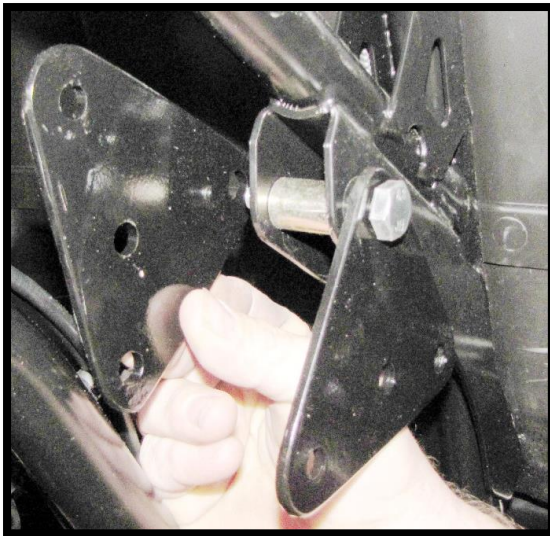




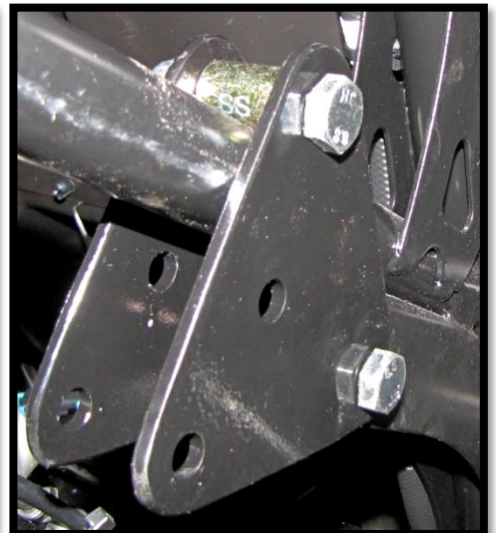
5. Insert a spacer (**81L**) between the shock mount tabs. Slide the bolt through the spacer and through the inner shock mount tab.



6. Place the other rear lift bracket (**84T**) to the outside of the inner shock mount tab and slide the bolt through. Loosely fasten it with a (**10mm lock nut**).

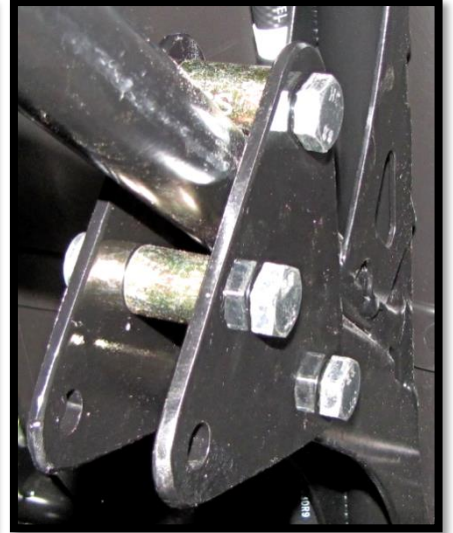
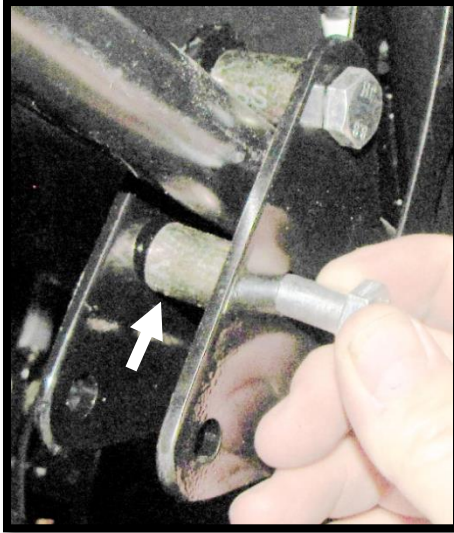


7. Rotate the lift brackets back into their correct position. Insert a (**10mm x 50mm bolt**) through the top hole of the bracket, and then slide a spacer (**SS**) over the bolt. Make sure it is installed over the top of the frame tube. Then loosely fasten it with a (**10mm lock nut**).

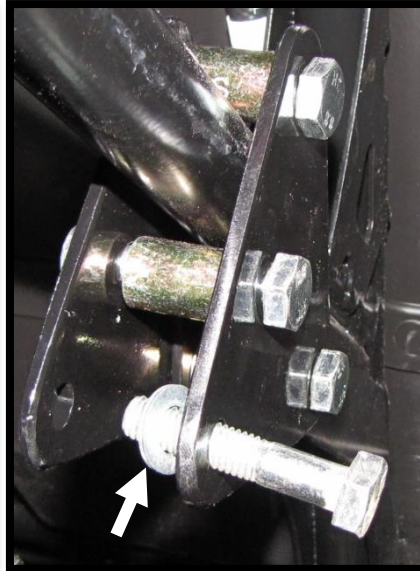




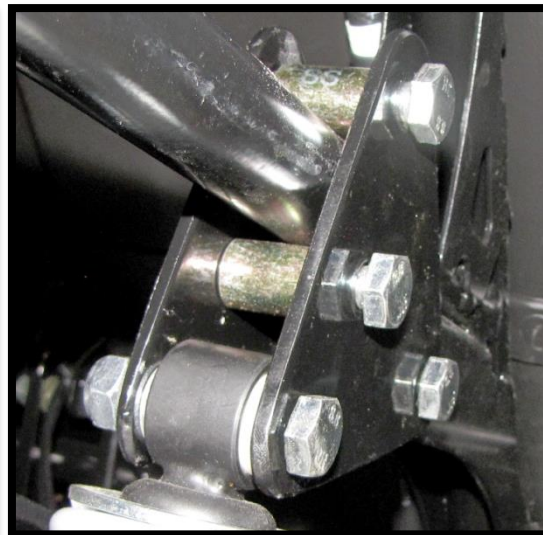
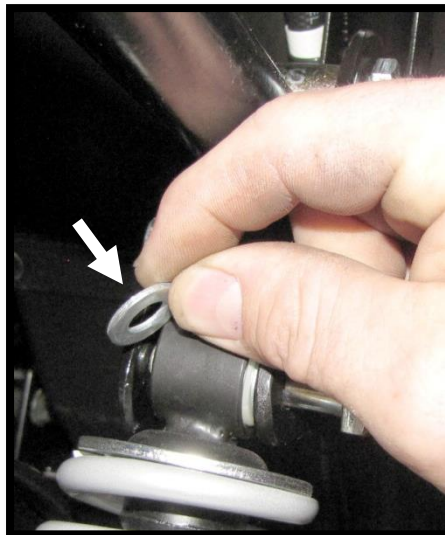
8. Insert a **(10mm x 50mm bolt)** through the hole of the bracket directly under the frame tube, followed by a spacer **(SS)**. Insert the bolt all the way through and loosely fasten it with a **(10mm lock nut)**.



9. Insert a **(10mm x 50mm bolt)** through the lower left hole of the bracket, followed by **(10mm flat washer)**. Now insert the top of the top of the shock between the brackets and slide the bolt through.

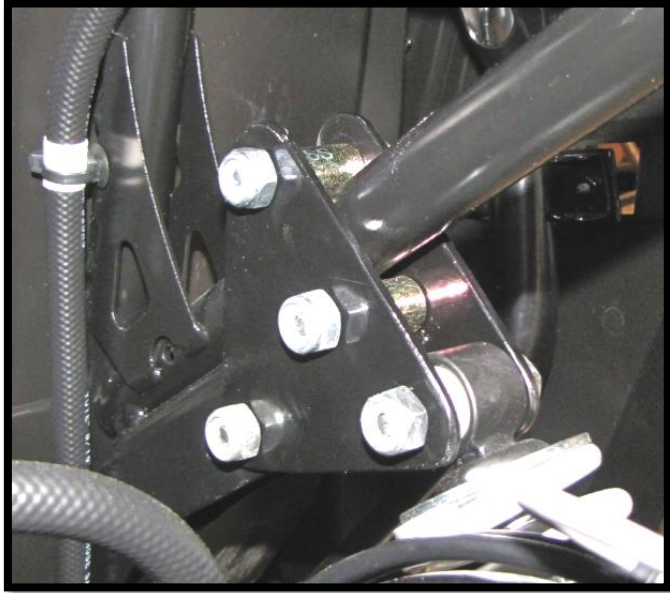
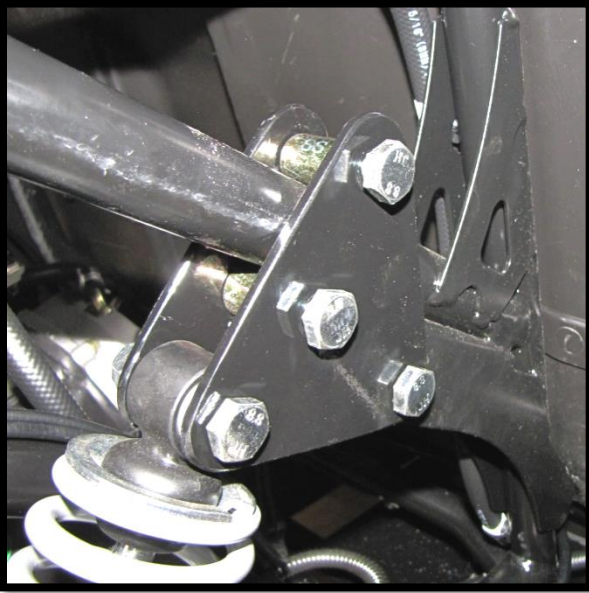


10. Next, slide a **(10mm flat washer)** between the shock and the lift bracket. Slide the bolt all the way through and loosely fasten it with a **(10mm lock nut)**.





11. Fasten all the nuts tight and repeat steps for the opposite side.



12. Place the wheels back on the UTV and torque lugs to factory specifications.

Thank You  
For Choosing  
**HIGHLIFTER**



### **High Lifter Lifetime Warranty**

From the beginning, High Lifter has engineered and manufactured some of the toughest, most durable products on the market. That's why this product comes with a Lifetime Warranty. It's our promise that High Lifter will never let you down.

- The **Lifetime Warranty** covers products sold to the original purchaser only and is not transferable. The term of the warranty is for the lifetime of the vehicle in question.
- Normal wear and tear items and finishes, such as, but not limited to: Heim joints, tie rod ends, ball joints, bearings, seals, bushings, bushing sleeves, zinc plating , powder coating, or chipping and discoloration of any finish is not covered.
- High Lifter will ship the replacement product after the returned product has been inspected by High Lifter staff.
- The warranty shall not include claims for damages, installation time or labor charges, economic losses, inconvenience, transportation, towing, down time, direct or indirect or consequential damages or delay resulting from any defect.
- The warranty does not apply to products that have been improperly applied or improperly installed.

### **Making a warranty claim**

1. All claims must be accompanied by the part and the original sales receipt or other acceptable proof of purchase from the original owner.
2. All warranties must be accompanied with a Return Merchandise Authorization (RMA) number. (Contact High Lifter at 318-524-2270 or 800-699-0947 for an RMA number)
3. When shipping the damaged product:
  - a. Write the RMA number on the outside of the box.
  - b. Also include the RMA number, proof of purchase and any notes inside the box.
  - c. Please keep your tracking number and shipment information.
4. The customer is responsible for shipping the product to High Lifter--return shipping within the lower 48 states will be paid by High Lifter products. With all warranty claims, only standard shipping services apply.
5. High Lifter will process your order within 24 business hours of receiving the returned item.
6. **Ship to:** High Lifter Products, 780 Professional Drive North, Shreveport, Louisiana 71105