



780 Professional Drive N. Shreveport, LA 71105 Phone (318)-524-2270 Fax (318)-524-2297
www.highlifter.com

Honda Lift Kit Installation Instructions

Read before Installation

This product is designed for use on ATVs and/or RUVs to increase ground clearance and fender clearance. Purchasers should be aware that use of this product may increase the frequency of required maintenance, part wear, and will raise the center of gravity on your ATV and/or RUV, increasing risk of roll-over, injury and death on all types of terrain. It is your responsibility to always inform other operators and passengers of this vehicle about the added risks.

High Lifter Products, products are designed to best fit users ATV/RUV under stock conditions. Adding, modifying, or fabricating any OEM or aftermarket parts will void warranty. High Lifter Products, products could interfere with other aftermarket accessories. If the user has aftermarket products on machine, contact High Lifter Products to verify that they will work together. Adding aftermarket suspension components and/or more aggressive tires can cause breakage of other OEM driveline components such as differentials, axles or drive shafts.

We recommend that wider tires and/or wheel spacers be used to achieve a wider stance and to improve stability of the ATV and/or RUV. Riders should be advised that the handling characteristics of a taller ATV and/or RUV are different and require extra care when riding, particularly on side hills or off-camber situations. If you further raise the center of gravity by adding taller tires, heavy loads to racks or seats, or by any other means, the ATV and/or RUV must be operated with even more care, at slower speeds and on relatively flat ground. All turns should be done at a slow speed, even on level ground.

Operation of an ATV and/or RUV with or without modified suspension components, while or shortly after consuming alcohol or drugs, subjects the rider to the risk of serious bodily harm or possible death. This risk is compounded if the rider does not wear an approved helmet and other safety gear. High Lifter urges that all approved safety gear be worn when riding an ATV and/or RUV as a driver or passenger.

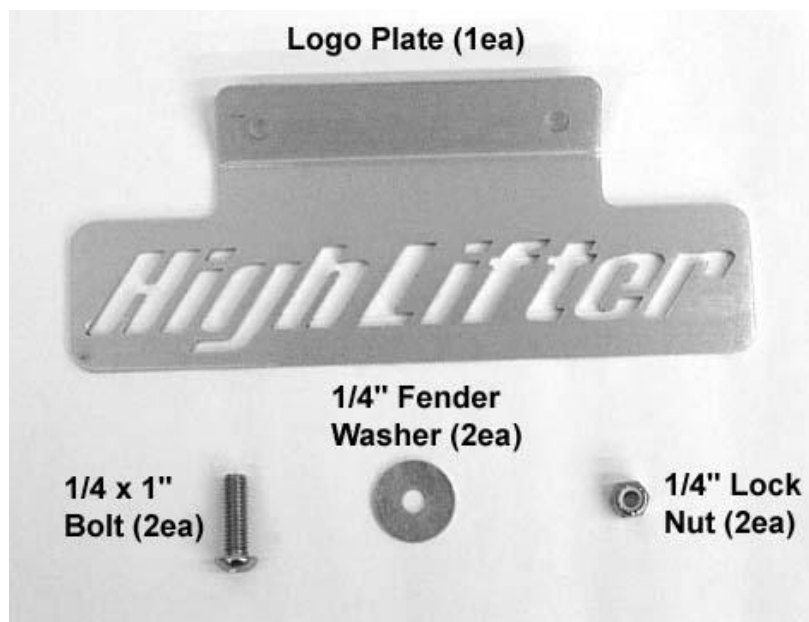
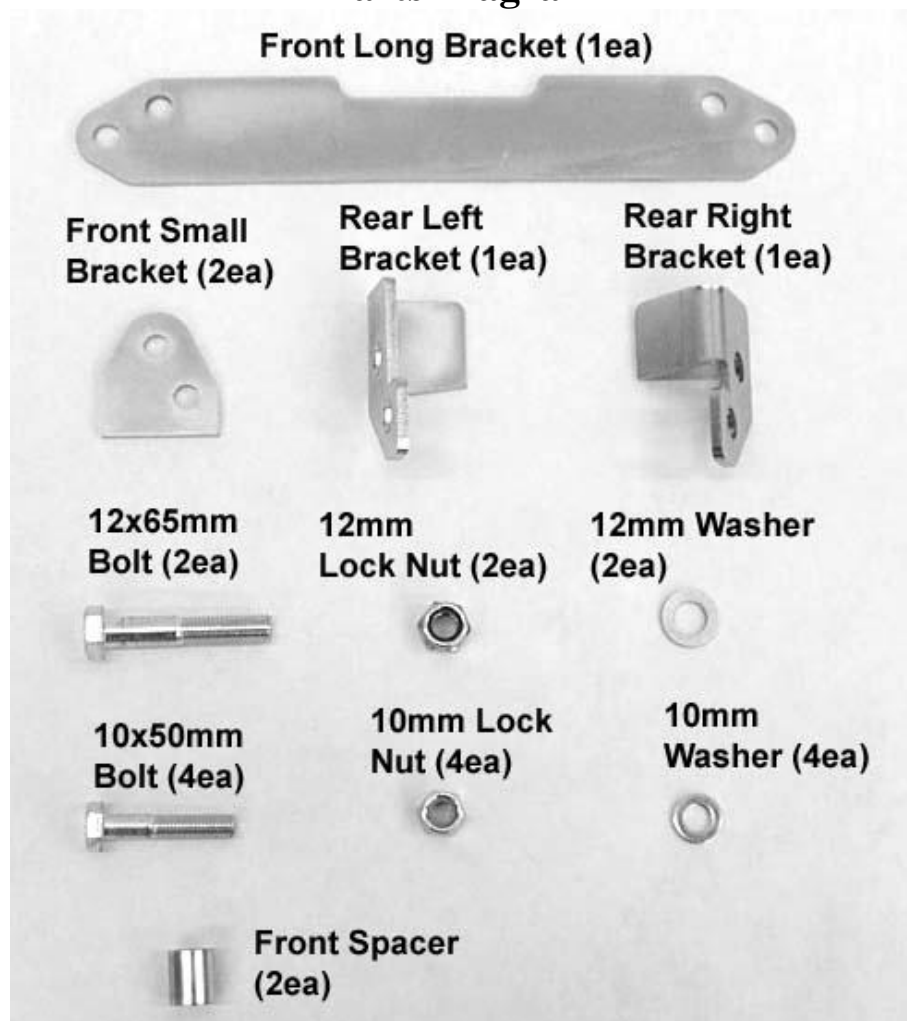
By purchasing and installing High Lifter Products, products, user agrees that should damages occur, High Lifter Products will not be held responsible for loss of time, use, labor fees, replacement parts, or freight charges. High Lifter Products will not be held responsible for any direct, indirect, incidental, special, or consequential damages that result from any product purchased from High Lifter Products. The total liability of seller to user for all damages, losses, and causes of action, shall not exceed the total purchase price paid for the product that gives rise to the claim.

Dealers and other Installers

You are responsible for informing your customer and end user of the information contained above and the increased potential hazards of operating an ATV and/or RUV equipped with modified suspension components. If you install any suspension modifying components, it is your responsibility to also install the warning label prominently in view of the driver and in prominent view of the driver and passenger on RUVs and multi-passenger ATVs. They should also be instructed to notify anyone operating the vehicle, as well as any passengers, that said vehicle is modified.

As discussed above, it is critically important that they be instructed in the need for slower speed operation, regardless of terrain, after this lift kit is installed.

Parts Diagram

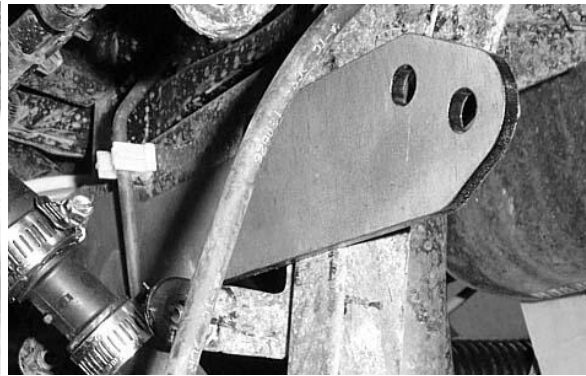


Front Lift Installation

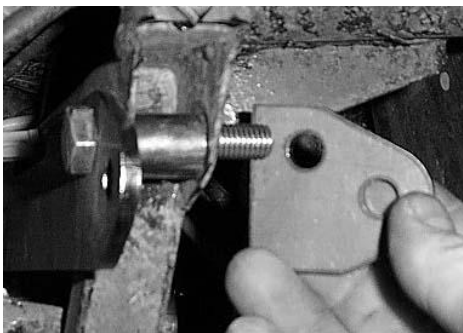
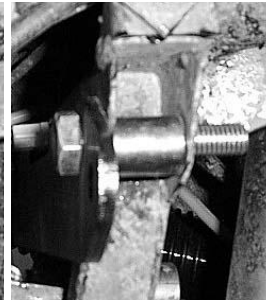
- 1) Place jack under center of ATV front end and lift until front wheels clear the ground. Be careful to support ATV properly so that it's secure, but so that the A-arms and shocks can droop to full extension.
- 2) Remove front wheels and top of the shocks on both sides of the ATV.



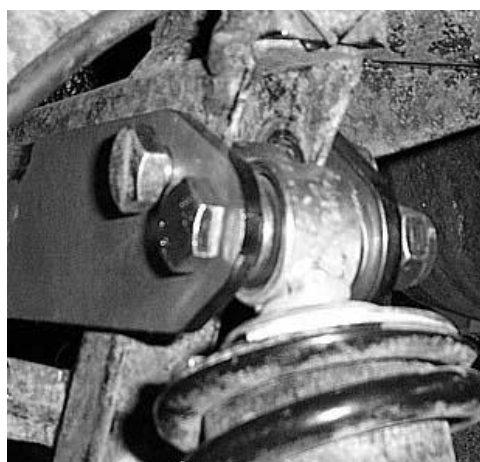
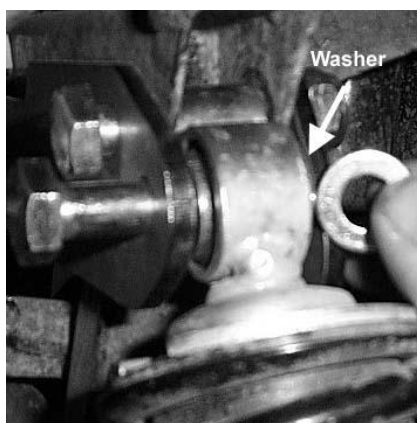
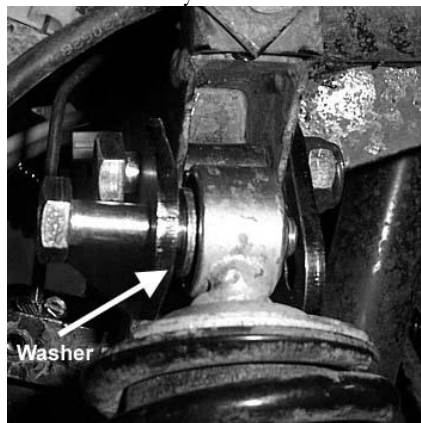
- 3) Insert the Long Front Lift bracket to the front of the ATV, running it from one shock mount to the other.



- 4) Place the Spacer in the shock mount on the frame and connect the Small Front Lift bracket to the inside of the frame using a 10x50mm hex bolt and 10mm lock nut.



- 5) Next, connect the top of the shock to the lift bracket. Make sure to place a 10mm washer on either side of the shock eyelet. Secure it with a 10x50mm hex bolt and 10mm lock nut.



- 6) Repeat steps for opposite side.
7) Place wheels back on ATV and torque all lugs to factory specifications.

Rear Lift Installation

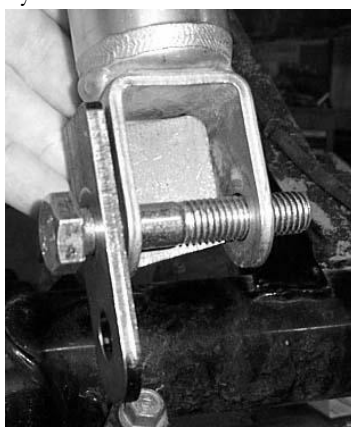
- 1) Disconnect the clamp that holds the brake line to the frame under the seat on the right side of the ATV.
- 2) Place jack under ATV at the rear of the bottom engine skid plate (**not the differential**), and lift until the weight is off of the suspension. Be careful to secure the ATV properly so as not to fall off the jack.
- 3) Disconnect the bottom of the shock from the shock mount.



- 4) After removing the bottom of the shocks, jack the ATV up an additional 1"-2".
- 5) Pull the shock up and away from the differential, clearing the rear drive axle housing.



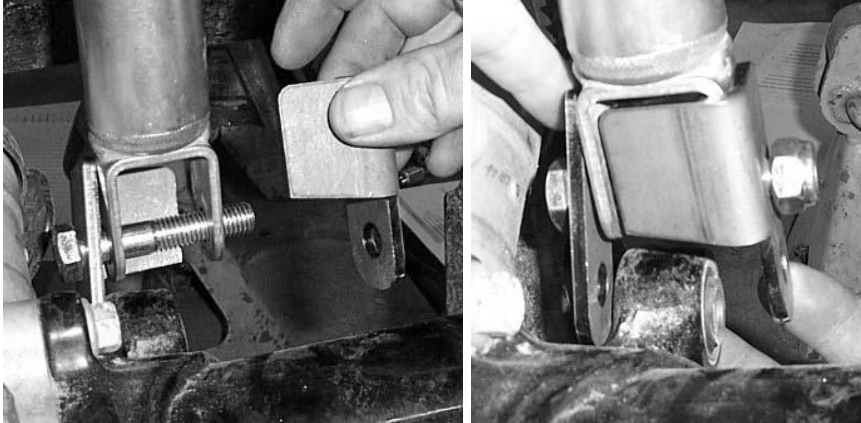
- 6) In order to connect the rear left bracket you need to attach one of the rear lift brackets to the bottom of the shock using the 12x65 hex bolt. While facing the shock, push the bolt from left to right. This will allow it to clear the differential when you connect the brackets to the frame.



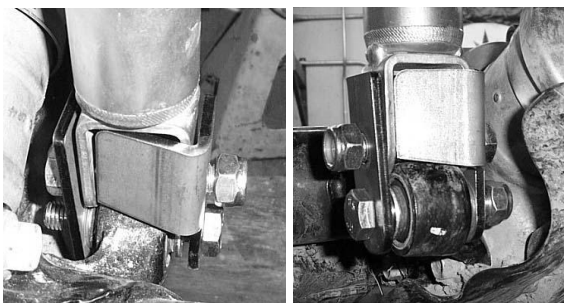
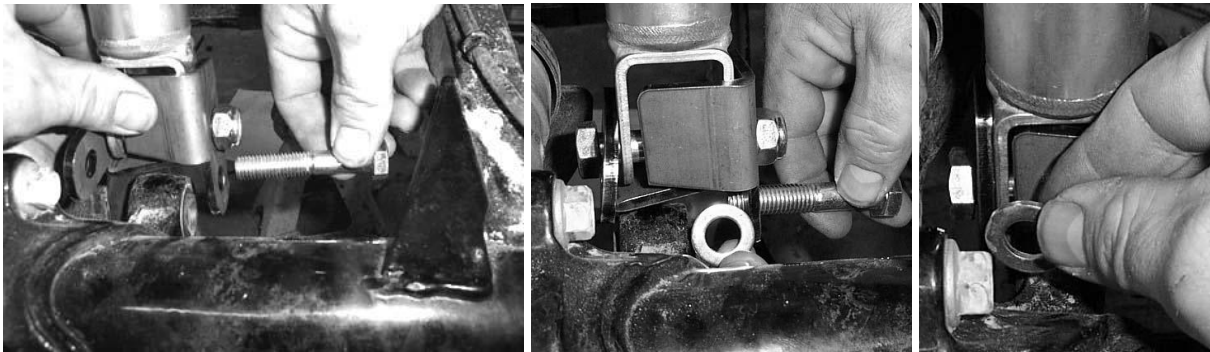
- 7) Once you have loosely attached the bracket, reposition the bottom of the shock over the shock mount.



- 8) Connect the other rear right lift bracket to the shock and fasten it with a 12mm lock nut



- 9) Now connect the brackets to the stock shock mount using the 12x65mm hex bolt, 4ea 12mm washers, and 12mm lock nut provided. Please two washers in either side of the lower shock eyelet when you insert the bolt.



Front View

Back View

- 10) When complete reattach wheels torque all lugs to factory specks and lower ATV.

Logo Plate Installation

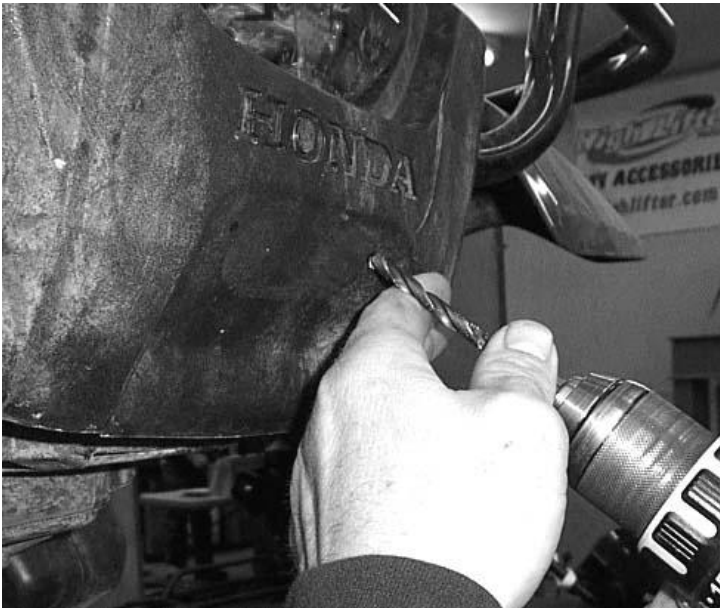
- 1) Place the logo bracket against the storage box cover on the rear of the ATV.



- 2) With a marker, mark the holes for the bolt holes that need to be drill in order to mount the bracket.



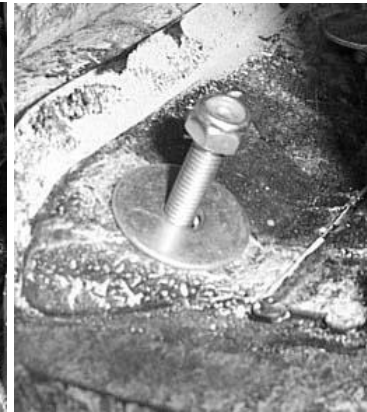
- 3) Drill the marked areas.



- 4) Place the logo bracket back into place over the storage box aligning the holes in the bracket and storage box. Insert the two 1/4x1" button head bolts through the bracket and cover.



- 5) On the inside of the storage box, place the 1/4" fender washer on the bolts and fasten tight with the 1/4" lock nut.



Thank You
For Choosing
HighLifter
PRODUCTS



High Lifter Lifetime Warranty

From the beginning, High Lifter has engineered and manufactured some of the toughest, most durable products on the market. That's why this product comes with a Lifetime Warranty. It's our promise that High Lifter will never let you down.

- The **Lifetime Warranty** covers products sold to the original purchaser only and is not transferable. The term of the warranty is for the lifetime of the vehicle in question.
- Normal wear and tear items and finishes, such as, but not limited to: Heim joints, tie rod ends, ball joints, bearings, seals, bushings, bushing sleeves, zinc plating , powder coating, or chipping and discoloration of any finish is not covered.
- High Lifter will ship the replacement product after the returned product has been inspected by High Lifter staff.
- The warranty shall not include claims for damages, installation time or labor charges, economic losses, inconvenience, transportation, towing, down time, direct or indirect or consequential damages or delay resulting from any defect.
- The warranty does not apply to products that have been improperly applied or improperly installed.

Making a warranty claim

1. All claims must be accompanied by the part and the original sales receipt or other acceptable proof of purchase from the original owner.
2. All warranties must be accompanied with a Return Merchandise Authorization (RMA) number. (Contact High Lifter at 318-524-2270 or 800-699-0947 for an RMA number)
3. When shipping the damaged product:
 - a. Write the RMA number on the outside of the box.
 - b. Also include the RMA number, proof of purchase and any notes inside the box.
 - c. Please keep your tracking number and shipment information.
4. The customer is responsible for shipping the product to High Lifter--return shipping within the lower 48 states will be paid by High Lifter products. With all warranty claims, only standard shipping services apply.
5. High Lifter will process your order within 24 business hours of receiving the returned item.
6. **Ship to:** High Lifter Products, 780 Professional Drive North, Shreveport, Louisiana 71105