

GM Wireless Charger Retrofit (Kit # FDMC-1285)

- Buick LaCrosse 2017-2018
- Buick Regal 2018
- Cadillac ATS 2015-2018
- Cadillac CT6 2015-2018
- Cadillac CTS 2015-2018
- Cadillac ELR 2015-2018
- Cadillac XT5 2015-2018
- Cadillac XTS 2015-2018
- Cadillac Escalade 2015-2017
- Cadillac Models 2015-2017
- Chevy Bolt EV 2015-2017
- Chevy Suburban 2015-2017
- Chevy Tahoe 2015-2017
- Chevy Volt 2015-2017
- Chevy Camaro 2016-2018
- Chevy Impala 2016-2018
- Chevy Malibu 2016-2018
- Chevy Colorado 2015-2018
- Chevy Cruze 2015-2018
- Chevy Equinox 2018
- Chevy Silverado 2016-2017
- GMC Canyon 2015-2018
- GMC Sierra 2016-2017
- GMC Yukon 2015-2017
- GMC Models 2015-2017

Please read thoroughly before starting installation and check that kit contents are complete.

Items Included in the Kit:

Wireless Charging Module
4 Spacers
4 7x3/4" screws
These instructions

Tools & Supplies Needed:

Plastic panel removal tools
T-20 Torx
Phillips Screwdriver

Safety Precautions:

- Work in well ventilated area that is clear of obstructions.
- Secure vehicle with tire chucks in both front and rear of tires.
- Turn vehicle accessories OFF and ensure ignition key is in OFF position.
- Wear safety goggles and snug fitting clothes.
- Use tools only for their intended purpose and which are in good repair.
- Only perform this task if confidence, skill, and physical ability permit.

NOTE: We strive to provide accurate and up-to-date installation instructions. For the latest full color instructions, as well as an installation video, please visit www.brandmotion.com

2015-2018 GM Full Size Truck (and 15-17 Escalade Models)

1. Using a panel removal tool, separate the interior trim from the arm rest



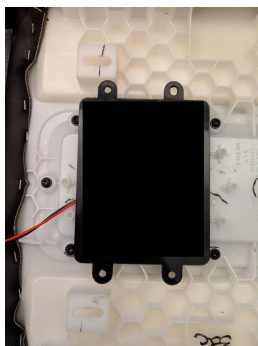
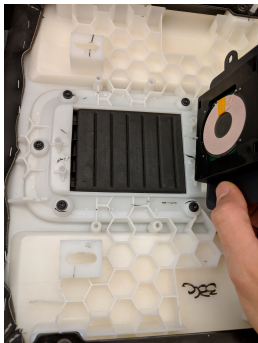
2. Disconnect power harness from charging module



3. Locate 4 screws securing charging module and remove the screws and the charge module. The screws will not be needed for the replacement charger.



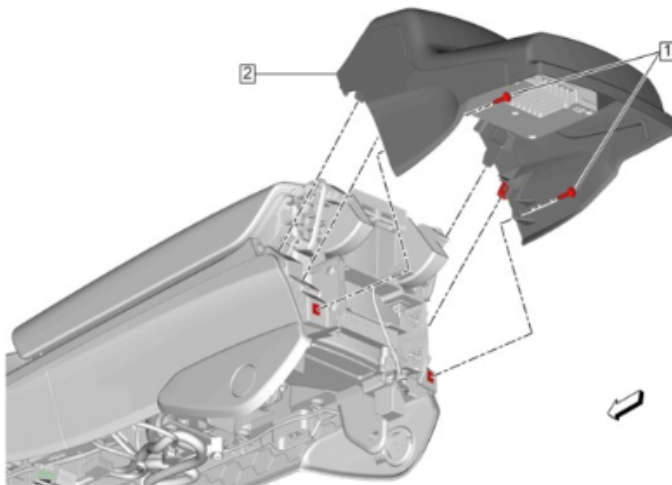
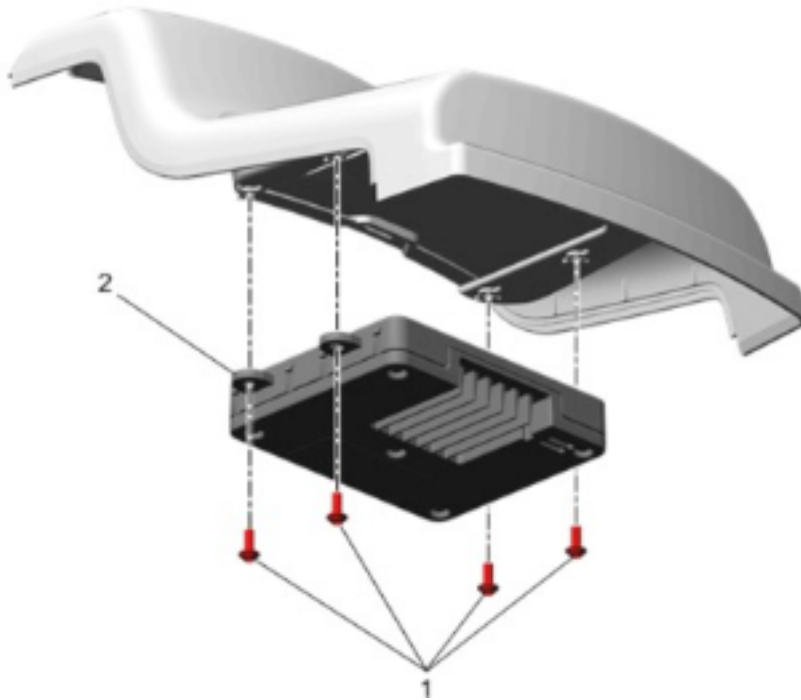
4. Orient the replacement charging coil so that it is facing the matt on the top edge. Use the supplied screws to secure replacement module to armrest. (Add the (4) included spacers to offset coil)



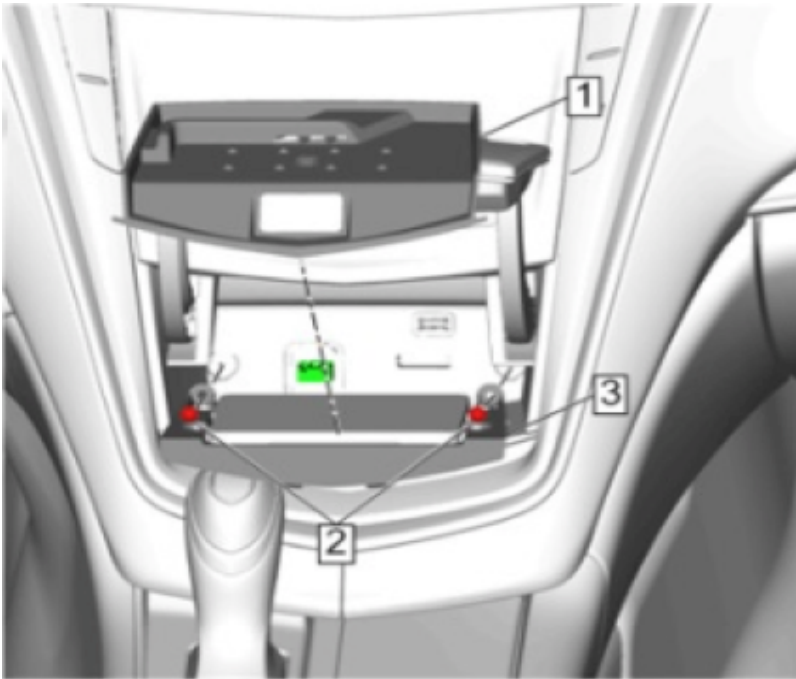
5. Connect power harness to new replacement charging module and snap panel back in place.



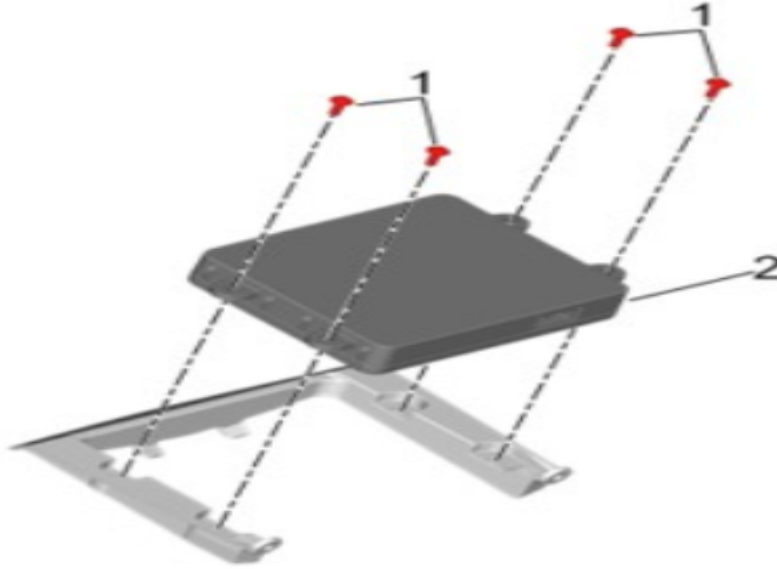
2016 Camaro



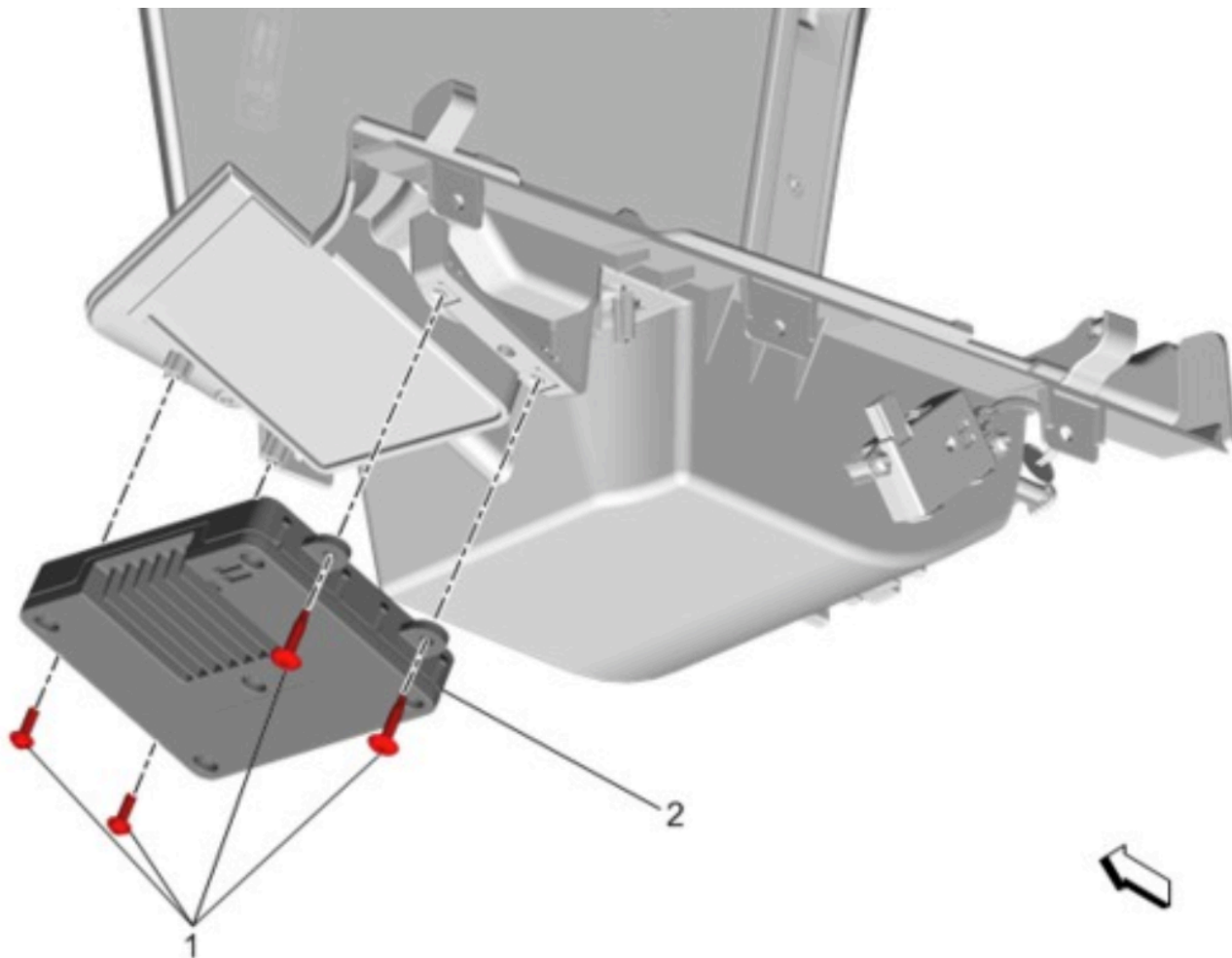
2015-2018 Cadillac ATS, CTS, ELR, XTS



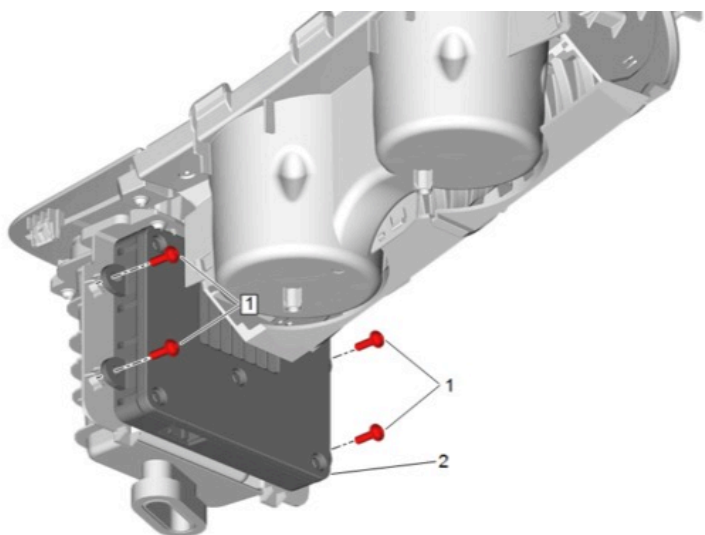
1. Instrument Panel Center Compartment Liner (1) » Remove
2. Wireless Charging System Module Bracket Bolt (2) » Remove [2x]
3. Disconnect the electrical connector.
4. Wireless Charging System Module Bracket (3) » Remove
5. Wireless Charging System Module Bracket Bolt (1) » Remove [4x]



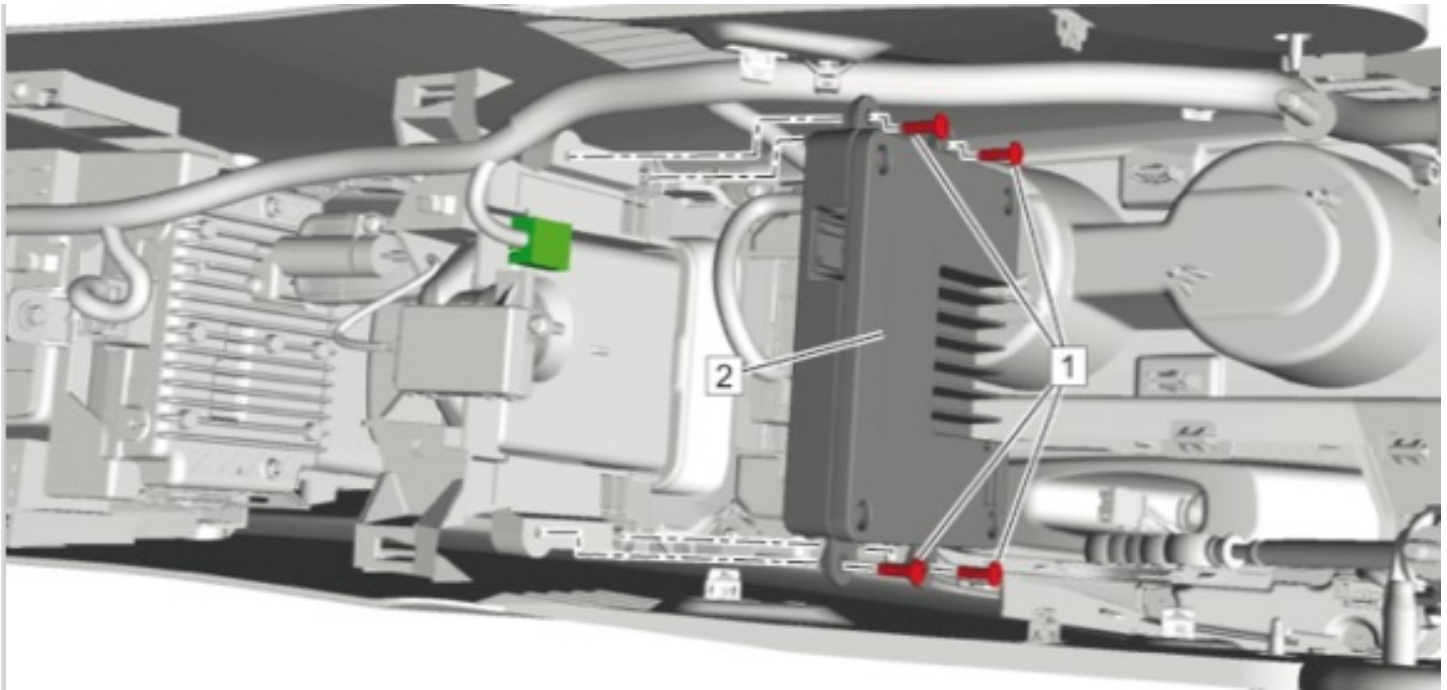
15-18 Cadillac CT6



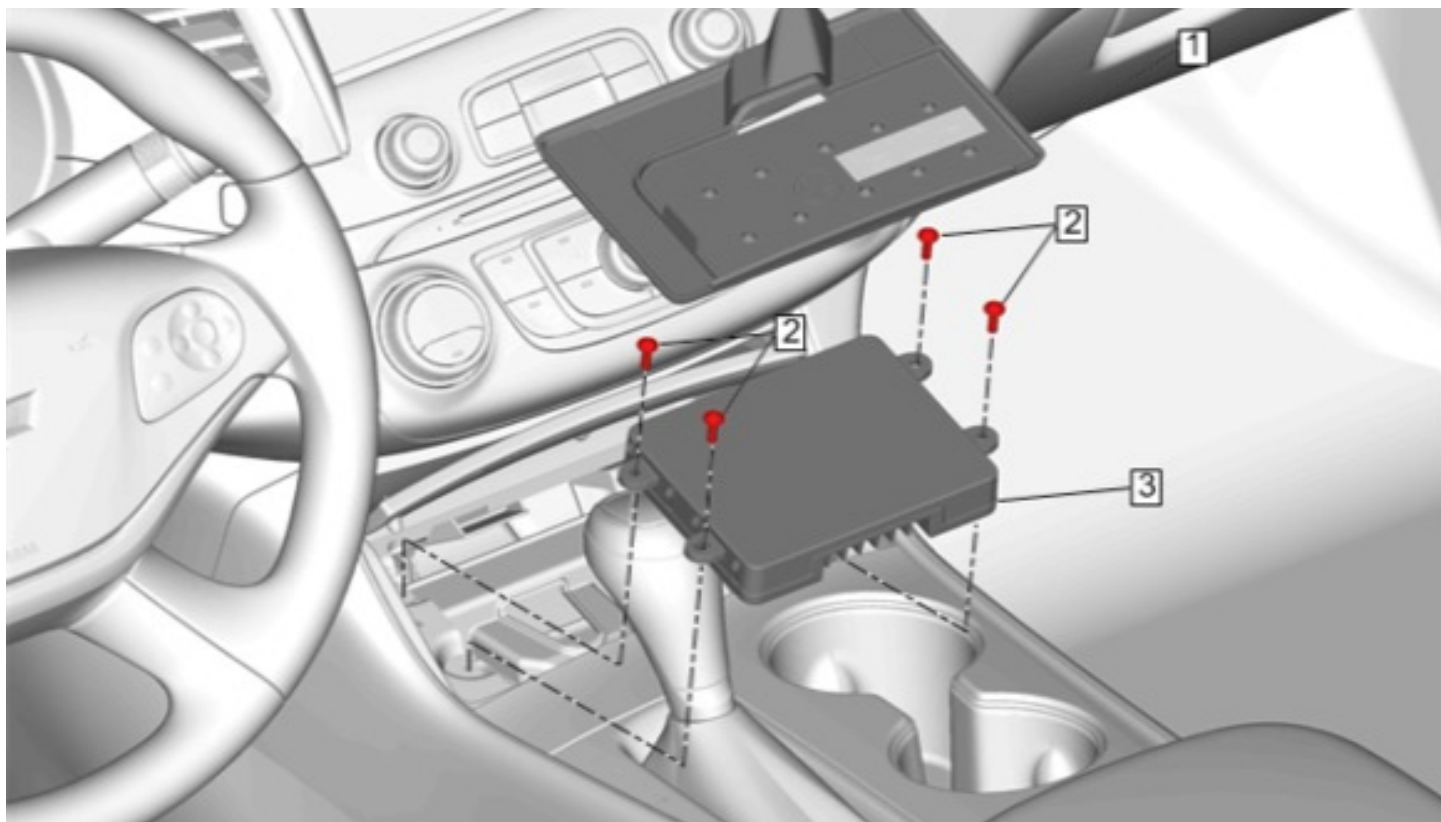
2018 LaCrosse



2017 LaCrosse 2017-2018 Cruze



2018 Impala, Malibu



2016 Volt

