

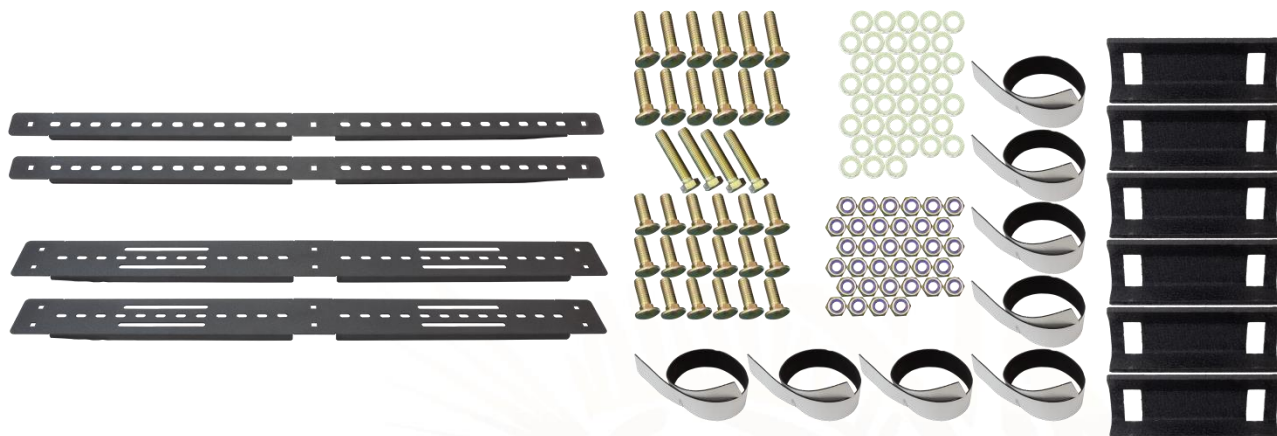


## INSTALLATION INSTRUCTIONS

**PART No.**

**FB22150**

**Jeep® JT Gladiator  
Tackle Rack**



### REQUIRED TOOLS

Utility Knife  
Ratchet  
19MM Socket  
19MM Wrench

### KIT CONTAINS

Foam Padding  
Arch Braces  
Side Support Braces  
Top Support Braces  
Bed Channel Mount Brackets  
M12 – 1.75 x 30mm Carriage Bolt  
M12 – 1.75 x 50mm Carriage Bolt  
M12 Washer 24mm OD  
M12 – 1.75 Nyloc Nut  
M12 – 1.75 x 60mm Hex Bolt

### QTY

8  
3  
2  
2  
6  
18  
12  
38  
34  
4

2215000

#### 1) PREPARE

Prior to installation, measure and cut the included foam padding so that it covers any vehicle contact points, arch and support brace connections, or where you feel it's needed.



#### 2) INSTALL ARCH BRACES

Place the arches on the bed. The 2 arches with the larger brackets belong on the outside.



The arch with our signature plate in the center faces the rear. Spacing will be determined by the support braces.



#### 3) INSTALL TOP SUPPORT BRACES

Start installing the two thinner support braces. With 6 of the 30mm bolts, washers, and nuts. Loosely secure them to the top of the arches in your desired locations.



#### 4) INSTALL SIDE SUPPORT BRACES

Loosely install the larger braces onto the sides of the arches, again using 6 bolt sets.





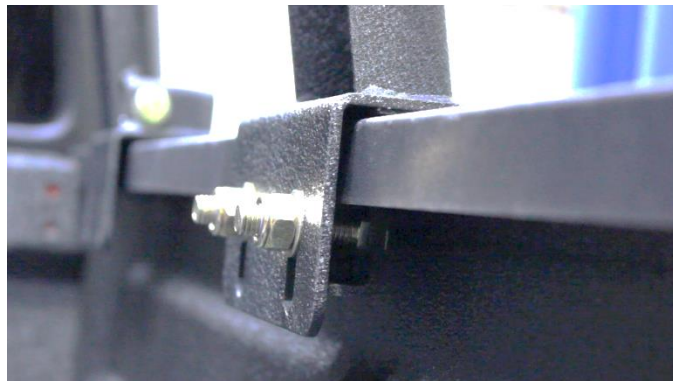
#### 5) **ADJUST SUPPORT BRACES**

Slide the braces around to your liking and tighten them down using a 19mm socket.



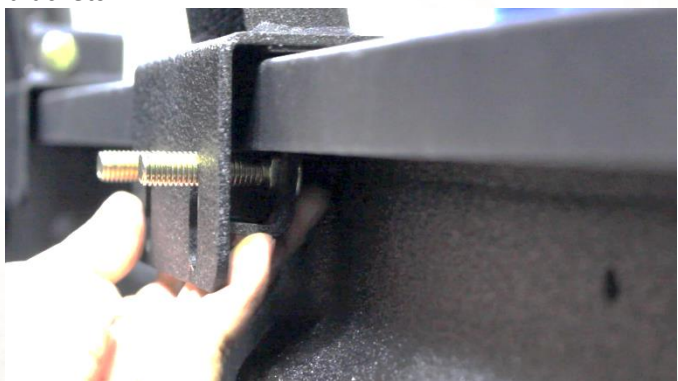
#### 7) **ACCESSORY MOUNTS**

Using the 4 60mm bolts, washers, and nuts, secure the hardware into the accessory mounts for future use.



#### 6) **INSTALL BED CHANNEL MOUNT BRACKETS**

Begin securing the rack to the bed by inserting two 50mm bolts into the included channel brackets as shown. Rotate it behind the arch bracket and push it high up against the plastic. With a 19mm socket, tighten down a nut and washer while ensuring it clamps onto the bed. Repeat for the remaining 5 brackets.



**ENJOY YOUR NEW FISHBONE OFFROAD JT BED RACK!**

